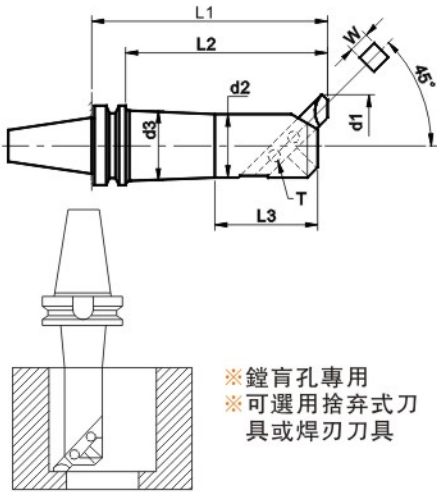


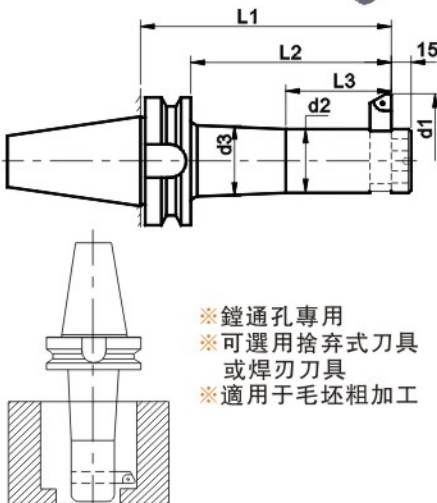
45° 斜插式粗鏢刀柄



※鏢盲孔專用  
※可選用捨棄式刀  
具或焊刃刀具

| 訂貨型號           | d1    |       | d2  | d3 | L2  | L3  | W  | T   | 重量Kg |
|----------------|-------|-------|-----|----|-----|-----|----|-----|------|
|                | 最小加工徑 | 最大加工徑 |     |    |     |     |    |     |      |
| BT40-BSA25-120 | 29    | 38    | 20  | 22 | 90  | 35  | 8  | M6  | 1.2  |
| -BSA30-150     | 30    | 42    | 24  | 26 | 120 | 40  |    |     | 1.4  |
| -BSA38-165     | 38    | 52    | 30  | 33 | 135 | 50  | 10 | M8  | 1.7  |
| -BSA42-165     | 42    | 56    | 34  | 37 |     |     |    |     | 2.0  |
| -BSA50-165     | 50    | 65    | 40  | 44 |     | 65  | 13 | M10 | 2.3  |
| -BSA62-180     | 62    | 90    | 50  | 56 | 150 | 80  | 16 | M10 | 2.4  |
| -BSA72-180     | 72    | 110   | 60  | —  |     | 95  | 19 |     | M12  |
| -BSA90-180     | 90    | 125   | 75  | —  |     | 110 |    | 5.2 |      |
| BT50-BSA25-135 | 25    | 38    | 20  | 22 | 92  | 35  | 8  | M6  | 4.2  |
| -BSA30-165     | 30    | 42    | 24  | 26 | 122 | 40  |    |     | 4.4  |
| -BSA38-180     | 38    | 52    | 30  | 33 | 137 | 50  | 10 | M8  | 4.8  |
| -BSA42-210     | 42    | 56    | 34  | 37 | 167 | 60  |    |     | 5.0  |
| -BSA50-180     | 50    | 65    | 40  | 44 | 137 | 65  | 13 | M10 | 5.4  |
| -BSA50-240     | 50    | 65    | 40  | 44 | 197 | 65  |    |     | 5.7  |
| -BSA62-195     | 62    | 90    | 50  | 56 | 152 | 80  | 16 | M10 | 6.2  |
| -BSA62-270     | 62    | 90    | 50  | 56 | 227 | 80  |    |     | 7.6  |
| -BSA72-195     | 72    | 110   | 60  | 66 | 152 | 95  | 19 | M10 | 7.0  |
| -BSA72-285     | 72    | 110   | 60  | 66 | 242 | 95  |    |     | 9.3  |
| -BSA90-210     | 90    | 125   | 75  | 80 | 167 | 110 | 25 | M12 | 9.2  |
| -BSA90-300     | 90    | 125   | 75  | 80 | 257 | 110 |    |     | 12.3 |
| -BSA105-195    | 105   | 160   | 90  | —  | —   | —   | 25 | M12 | 10.7 |
| -BSA105-285    | 105   | 160   | 90  | 94 | —   | 130 |    |     | 15.0 |
| -BSA130-255    | 130   | 190   | 110 | —  | —   | 120 | 25 | M12 | 14.5 |

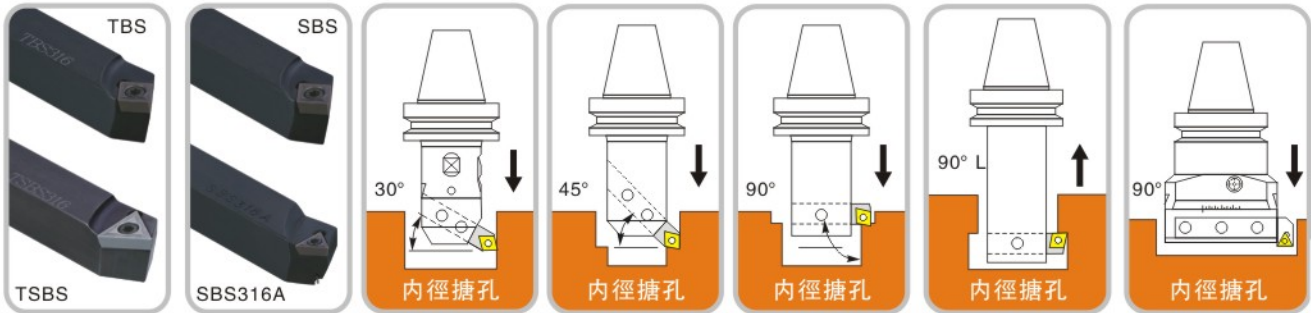
90° 斜插式粗鏢刀柄



※鏢通孔專用  
※可選用捨棄式刀  
具或焊刃刀具  
※適用於毛坯粗加工

| 訂貨型號           | d1    |       | d2  | d3 | L2  | L3  | W  | T   | 重量Kg |
|----------------|-------|-------|-----|----|-----|-----|----|-----|------|
|                | 最小加工徑 | 最大加工徑 |     |    |     |     |    |     |      |
| BT40-BSB25-120 | 25    | 52    | 20  | 22 | 90  | 35  | 8  | M6  | 1.2  |
| -BSB38-150     | 38    | 70    | 30  | 33 | 120 | 55  |    | M8  | 1.7  |
| -BSB50-165     | 50    | 90    | 40  | 44 | 135 | 70  | 13 | M10 | 2.5  |
| -BSB62-180     | 62    | 115   | 50  | 56 | 150 | 80  |    |     | 3.6  |
| -BSB90-180     | 90    | 150   | 75  | —  | 150 | 115 | 19 | M12 | 5.9  |
| BT50-BSB25-135 | 25    | 52    | 20  | 22 | 92  | 35  | 8  | M6  | 4.3  |
| -BSB38-180     | 38    | 70    | 30  | 32 | 137 | 55  | 10 | M8  | 4.9  |
| -BSB50-180     | 50    | 90    | 40  | 44 | 137 | 70  | 13 | M10 | 5.5  |
| -BSB50-240     | 50    | 90    | 40  | 44 | 197 | 70  |    |     | 5.8  |
| -BSB62-195     | 62    | 115   | 50  | 56 | 152 | 80  | 16 | M10 | 6.4  |
| -BSB62-270     | 62    | 115   | 50  | 56 | 227 | 80  |    |     | 7.8  |
| -BSB72-195     | 72    | 135   | 60  | 66 | 152 | 95  | 19 | M10 | 7.3  |
| -BSB72-285     | 72    | 135   | 60  | 66 | 242 | 95  |    |     | 9.6  |
| -BSB90-210     | 90    | 150   | 75  | 80 | 167 | 115 | 25 | M12 | 9.7  |
| -BSB90-300     | 90    | 150   | 75  | 80 | 257 | 115 |    |     | 12.8 |
| -BSB105-195    | 105   | 190   | 90  | 90 | —   | —   | 25 | M12 | 11.4 |
| -BSB105-285    | 105   | 190   | 90  | 94 | —   | 135 |    |     | 15.7 |
| -BSB130-255    | 130   | 260   | 110 | —  | —   | 60  | 25 | M12 | 14.1 |

搪孔刀

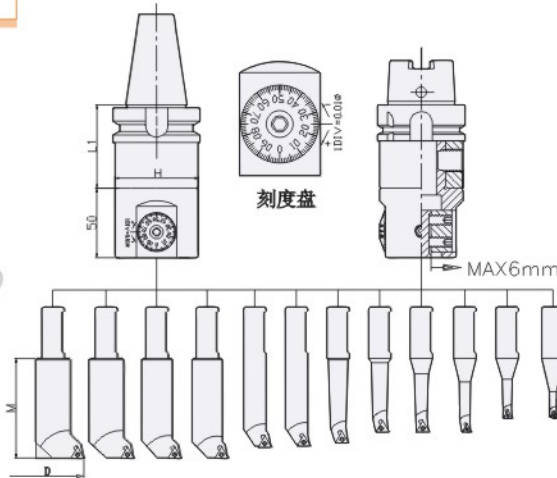


| Insert Shape            | Fig-1 Ordering code | Insert     | Fig-2 Ordering code | Insert     | Fig-2 Ordering code | Insert     | Fig-3 Ordering code | Insert     | Dimensions, mm |     |     |
|-------------------------|---------------------|------------|---------------------|------------|---------------------|------------|---------------------|------------|----------------|-----|-----|
|                         |                     |            |                     |            |                     |            |                     |            | H              | w   | L   |
| <br>1<br><br>2<br><br>3 | TBS306              | CC..0602.. | TSBS306             | TC..0902.. | SBS306              | TP..0902.. |                     |            | 6              | 6   | 55  |
|                         | TBS308              | CC..0602.. | TSBS308             | TC..0902.. | SBS308              | TP..0902.. | SBS308A             | TP..0902.. | 8              | 8   | 55  |
|                         | TBS310              | CC..0602.. | TSBS310             | TC..0902.. | SBS310              | TP..0902.. | SBS310A             | TP..0902.. | 10             | 10  | 65  |
|                         | TBS313              | CC..09T3.. | TSBS313             | TC..1102.. | SBS313              | TP..1103.. | SBS313A             | TP..1103.. | 13             | 13  | 80  |
|                         | TBS316              | CC..09T3.. | TSBS316             | TC..16T3.. | SBS316              | TP..1103.. | SBS316A             | TP..1103.. | 16             | 16  | 120 |
|                         | TBS319              | CC..1204.. | TSBS319             | TC..16T3.. | SBS319              | TP..1603.. | SBS319A             | TP..1603.. | 19             | 19  | 140 |
| TBS325                  | CC..1204..          | TSBS325    | TC..16T3..          | SBS325     | TP..1603..          |            |                     | 25         | 25             | 150 |     |
| <br>1<br><br>2<br><br>3 | TBS406              | CC..0602.. | TSBS406             | TC..0902.. | SBS406              | TP..0902.. |                     |            | 6              | 6   | 55  |
|                         | TBS408              | CC..0602.. | TSBS408             | TC..0902.. | SBS408              | TP..0902.. | SBS408A             | TP..0902.. | 8              | 8   | 55  |
|                         | TBS410              | CC..0602.. | TSBS410             | TC..0902.. | SBS410              | TP..0902.. | SBS410A             | TP..0902.. | 10             | 10  | 65  |
|                         | TBS413              | CC..09T3.. | TSBS413             | TC..1102.. | SBS413              | TP..1103.. | SBS413A             | TP..1103.. | 13             | 13  | 80  |
|                         | TBS416              | CC..09T3.. | TSBS416             | TC..16T3.. | SBS416              | TP..1103.. | SBS416A             | TP..1103.. | 16             | 16  | 120 |
|                         |                     |            |                     |            | SBS416B             | TP..1603.. |                     |            | 16             | 16  | 120 |
| TBS419                  | CC..1204..          | TSBS419    | TC..16T3..          | SBS419     | TP..1603..          | SBS419A    | TP..1603..          | 19         | 19             | 140 |     |
| TBS425                  | CC..1204..          | TSBS425    | TC..16T3..          | SBS425     | TP..1603..          |            |                     | 25         | 25             | 150 |     |
| <br>1<br><br>2<br><br>3 | TBS906              | CC..0602.. | TSBS906             | TC..0902.. | SBS906              | TP..0902.. |                     |            | 6              | 6   | 55  |
|                         | TBS908              | CC..0602.. | TSBS908             | TC..0902.. | SBS908              | TP..0902.. | SBS908A             | TP..0902.. | 8              | 8   | 55  |
|                         | TBS910              | CC..0602.. | TSBS910             | TC..0902.. | SBS910              | TP..0902.. | SBS910A             | TP..0902.. | 10             | 10  | 65  |
|                         | TBS913              | CC..09T3.. | TSBS913             | TC..1102.. | SBS913              | TP..1103.. | SBS913A             | TP..1103.. | 13             | 13  | 80  |
|                         | TBS916              | CC..09T3.. | TSBS916             | TC..16T3.. | SBS916              | TP..1103.. | SBS916A             | TP..1103.. | 16             | 16  | 120 |
|                         |                     |            |                     |            | SBS916B             | TP..1603.. |                     |            | 16             | 16  | 120 |
| TBS919                  | CC..1204..          | TSBS919    | TC..16T3..          | SBS919     | TP..1603..          | SBS919A    | TP..1603..          | 19         | 19             | 140 |     |
| TBS925                  | CC..1204..          | TSBS925    | TC..16T3..          | SBS925     | TP..1603..          |            |                     | 25         | 25             | 150 |     |
| <br>1                   | TBS908L             | CC..0602.. |                     |            |                     |            |                     |            | 8              | 8   | 55  |
|                         | TBS910L             | CC..0602.. |                     |            |                     |            |                     |            | 10             | 10  | 65  |
|                         | TBS913L             | CC..09T3.. |                     |            |                     |            |                     |            | 13             | 13  | 80  |
|                         | TBS916L             | CC..09T3.. |                     |            |                     |            |                     |            | 16             | 16  | 120 |
|                         | TBS919L             | CC..1204.. |                     |            |                     |            |                     |            | 19             | 19  | 140 |
| <br>2                   |                     |            |                     |            | BSB916              | TP..1103.. |                     |            | 16             | 16  | 150 |
|                         |                     |            |                     |            | BSB920              | TP..1103.. |                     |            | 20             | 20  | 150 |

| Insert     | Screw   | Wrench | Insert     | Screw   | Wrench | Insert     | Screw   | Wrench |
|------------|---------|--------|------------|---------|--------|------------|---------|--------|
| CC..0602.. | MS2506A | TF9    | TC..0902.. | MS2206A | TF7    | TP..0902.. | MS2506A | TF9    |
| CC..09T3.. | MS4011A | TF15   | TC..1102.. | MS2506A | TF9    | TP..1103.. | MS3008A | TF9    |
| CC..1204.. | MS5011A | TF20   | TC..16T3.. | MS4011A | TF15   | TP..1603.. | MS4011A | TF15   |



NBJ16微調精鏢組合(套裝)



| 訂貨型號        |                      | 鏢孔範圍<br>ØD | 刀柄型號               | L1 | H  |
|-------------|----------------------|------------|--------------------|----|----|
| 8支組<br>(標準) | BT40-NBJ16-8P        | 8-50       | BT40-ECK5-60       | 60 | 60 |
|             | BT50-NBJ16-8P        |            | BT50-ECK5-75       | 75 |    |
|             | SK40-NBJ16-8P        |            | SK40-ECK5-65       | 65 |    |
|             | SK50-NBJ16-8P        |            | SK50-ECK5-75       | 75 |    |
|             | DIN2080-40-NBJ16-8P  |            | DIN2080-40-ECK5-60 | 60 |    |
|             | DIN2080-50-NBJ16-8P  |            | DIN2080-50-ECK5-75 | 75 |    |
|             | HSK-A63-NBJ16-8P     |            | HSK-A63-ECK5-75    | 75 |    |
|             | HSK-A100-NBJ16-8P    |            | HSK-A100-ECK5-75   | 75 |    |
|             | BT40-NBJ16-12P       | 6-55       | BT40-ECK5-60       | 60 | 60 |
|             | BT50-NBJ16-12P       |            | BT50-ECK5-75       | 75 |    |
|             | SK40-NBJ16-12P       |            | SK40-ECK5-65       | 65 |    |
|             | SK50-NBJ16-12P       |            | SK50-ECK5-75       | 75 |    |
|             | DIN2080-40-NBJ16-12P |            | DIN2080-40-ECK5-60 | 60 |    |
|             | DIN2080-50-NBJ16-12P |            | DIN2080-50-ECK5-75 | 75 |    |
|             | HSK-A63-NBJ16-12P    |            | HSK-A63-ECK5-75    | 75 |    |
|             | HSK-A100-NBJ16-12P   |            | HSK-A100-ECK5-75   | 75 |    |

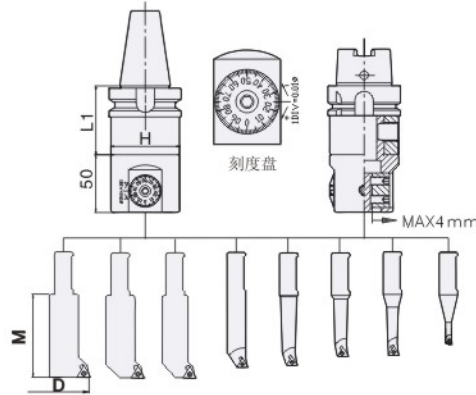
▲ 以上規格為整套組合，也可單獨訂購刀柄及刀杆，請在訂購時註明具體規格！

鏢刀杆規格(標準型/加長型)

| 鏢刀杆規格-深度<br>標準型 | 鏢刀杆規格-深度<br>加長型 | 鏢孔範圍<br>ØD | 刀片規格        | 刀片螺絲     | 扳手 | 切入量      | 進給量       |
|-----------------|-----------------|------------|-------------|----------|----|----------|-----------|
| BJ1606-20       | BJ1606-24L      | 6-9        | WBG060102L  | CSTB-2   | T6 | 0.05-0.2 | 0.05-0.1  |
| BJ1608-28※      | BJ1608-32L※     | 8-11       | TBG060102L  |          |    | 0.05-0.2 | 0.05-0.1  |
| BJ1610-36※      | BJ1610-40L※     | 10-13      | TBG060104L  |          |    | 0.1-0.25 | 0.07-0.15 |
| BJ1612-42※      | BJ1612-53L※     | 12-17      | TPGT090202L | CSTB-2.5 | T8 | 0.05-0.2 | 0.05-0.1  |
| BJ1614-50       | BJ1614-60L      | 14-19      |             |          |    |          |           |
| BJ1616-60※      | BJ1616-68L※     | 16-21      |             |          |    |          |           |
| BJ1620-63※      | BJ1620-83L※     | 20-26      |             |          |    |          |           |
| BJ1624-64※      | BJ1624-90L※     | 24-31      | TPGT090204L | CSTB-2.5 | T8 | 0.1-0.25 | 0.07-0.15 |
| BJ1630-72※      | BJ1630-90L※     | 30-40      |             |          |    |          |           |
| BJ1635-72       | BJ1635-90L      | 35-45      |             |          |    |          |           |
| BJ1640-72※      | BJ1640-90L※     | 40-50      |             |          |    |          |           |
| BJ1645-72       | BJ1645-90L      | 45-55      |             |          |    |          |           |

- ★ 鏢刀杆規格帶※的為標準8支組合。
- ★ 以上規格為整套組合，也可單獨訂購刀柄及刀杆，請在訂購時註明具體規格。
- ★ 鏢刀杆材質有高速鋼和合金鋼可供選擇。

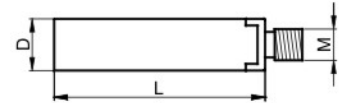
## NBJ12微調精鏢組合(套裝)



| 訂貨型號        |                     | 鏢孔範圍<br>ØD | 刀柄型號               | L1 | H  | 鏢刀杆規格<br>-深度<br>標準型 | 鏢孔範圍<br>ØD | 刀片規格       | 刀片螺絲   | 扳手 |
|-------------|---------------------|------------|--------------------|----|----|---------------------|------------|------------|--------|----|
| 8支組<br>(標準) | BT30-NBJ12-8P       | 6-24       | BT30-ECK4-45       | 45 | 48 | BJ1206-24           | 6-10       | WBGT060104 | CSTB-2 | T6 |
|             | BT40-NBJ12-8P       |            | BT40-ECK4-60       | 60 |    | BJ1208-32           | 8-12       | TBGT060104 |        |    |
|             | BT50-NBJ12-8P       |            | BT50-ECK4-75       | 75 |    | BJ1210-40           | 10-14      | TBGT090204 |        |    |
|             | SK40-NBJ12-8P       |            | SK40-ECK4-65       | 65 |    | BJ1212-45           | 12-16      |            |        |    |
|             | SK50-NBJ12-8P       |            | SK50-ECK4-75       | 75 |    | BJ1214-45           | 14-18      | CSTB-2.5   | T8     |    |
|             | DIN2080-40-NBJ12-8P |            | DIN2080-40-ECK4-60 | 60 |    | BJ1216-45           | 16-20      |            |        |    |
|             | DIN2080-50-NBJ12-8P |            | DIN2080-50-ECK4-75 | 75 |    | BJ1218-45           | 18-22      |            |        |    |
|             | HSK-A63-NBJ12-8P    |            | HSK-A63-ECK4-75    | 75 |    | BJ1220-45           | 20-24      |            |        |    |

▲ 以上規格為整套組合，也可單獨訂購刀柄及刀杆，請在訂購時注明具體規格！ ★ 鏢刀杆材質有高速鋼和合金鋼可供選擇。

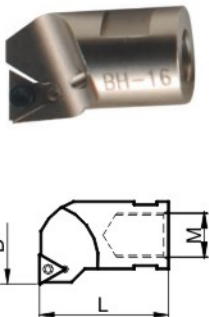
## 鎢鋼柄小徑鏢刀杆



| 訂貨型號        | 尺寸 (mm) |          | 適用鏢刀頭        |
|-------------|---------|----------|--------------|
|             | Ø D     | M        |              |
| SC08-M5-115 | 8       | M5 × 0.8 | BH09, BH10.5 |
| SC10-M6-115 | 10      | M6 × 1.0 | BH12         |
| SC10-M6-135 | 10      | M6 × 1.0 | BH12         |
| SC10-M6-160 | 10      | M6 × 1.0 | BH12         |
| SC12-M6-115 | 12      | M6 × 1.0 | BH14, BH16   |
| SC12-M6-135 | 12      | M6 × 1.0 | BH14, BH16   |

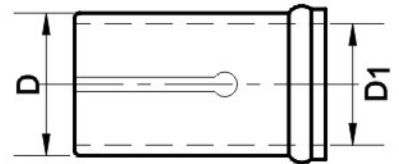
| 訂貨型號         | 尺寸 (mm) |            | 適用鏢刀頭                  |
|--------------|---------|------------|------------------------|
|              | Ø D     | M          |                        |
| SC12-M6-165  | 12      | M6 × 1.0   | BH14, BH16             |
| SC14-M6-160  | 14      | M6 × 1.0   | BH16                   |
| SC16-M10-105 | 16      | M10 × 1.25 | BH18, BH20, BH22, BH24 |
| SC16-M10-140 | 16      | M10 × 1.25 | BH26, BH28, BH30, BH32 |
| SC16-M10-180 | 16      | M10 × 1.25 | BH34, BH36, BH38, BH40 |

## 模組化鏢刀頭



| 訂貨型號   | 尺寸 (mm) |         |    | 刀片          | 螺絲   | 扳手 |
|--------|---------|---------|----|-------------|------|----|
|        | Ø D     | 鏢孔範圍    | M  |             |      |    |
| BH09   | 9       | 9-10.5  | 18 | TPGT080204L | M2.2 | T  |
| BH10.5 | 10.5    | 10.5-12 |    |             |      |    |
| BH12   | 12      | 12-14   |    |             |      |    |
| BH14   | 14      | 14-16   | 23 |             |      |    |
| BH16   | 16      | 16-18   |    |             |      |    |
| BH18   | 18      | 18-20   | 27 |             |      |    |
| BH20   | 20      | 20-22   |    |             |      |    |
| BH22   | 22      | 22-24   |    |             |      |    |
| BH24   | 24      | 24-26   |    |             |      |    |
| BH26   | 26      | 26-28   |    |             |      |    |
| BH28   | 28      | 28-30   |    |             |      |    |
| BH30   | 30      | 30-32   |    |             |      |    |
| BH32   | 32      | 32-34   |    |             |      |    |
| BH34   | 34      | 34-36   |    |             |      |    |
| BH36   | 36      | 36-38   |    |             |      |    |
| BH38   | 38      | 38-40   |    |             |      |    |
| BH40   | 40      | 40-42   |    |             |      |    |

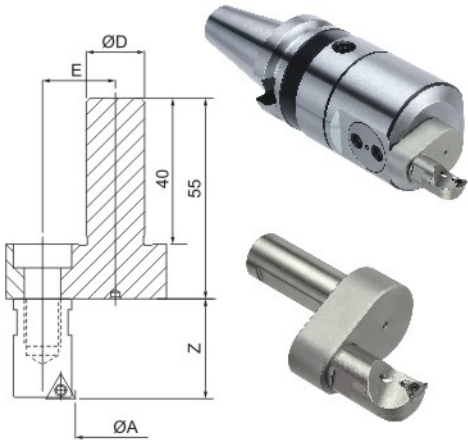
## 套筒



| 訂貨型號   | 尺寸 (mm) |      |
|--------|---------|------|
|        | Ø D     | Ø D1 |
| CS1608 | 16      | 8    |
| CS1610 | 16      | 10   |
| CS1612 | 16      | 12   |
| Cs1614 | 16      | 14   |



CBR20, CBR30 組合式外圓鏜孔組件 (φ 5-52)

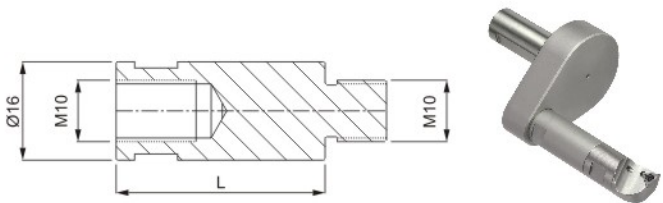


- ★ C16-CBR20、CBR30 为 NBJ16 搪孔器专用搪外圆组件
- ★ C20-CBR20、CBR30 为 NBH2084 搪孔器专用搪外圆组件

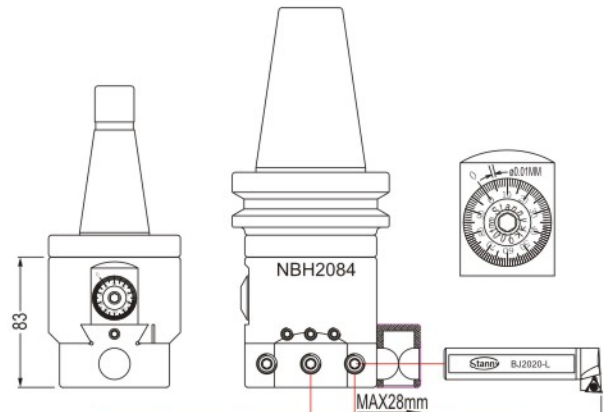
| 订货型号                   | 搪孔头BE型  | 外圆搪孔范围<br>ØA | 偏心距离E | 有效深<br>L | 柄径<br>ØD | 刀片规格          |
|------------------------|---------|--------------|-------|----------|----------|---------------|
| C16-CBR20<br>C20-CBR20 | BE 36 A | 5-14         | 20    | 27       | 16/20    | TP08/<br>M2.2 |
|                        | BE 34 A | 7-16         |       |          |          |               |
|                        | BE 32 A | 9-18         |       |          |          |               |
|                        | BE 30 A | 11-20        |       |          |          |               |
|                        | BE 28 A | 13-22        |       |          |          |               |
|                        | BE 26 A | 15-24        |       |          |          |               |
|                        | BE 24 A | 17-26        |       |          |          |               |
|                        | BE 22 A | 19-28        |       |          |          |               |
|                        | BE 20 A | 21-30        |       |          |          |               |
| C16-CBR30<br>C20-CBR30 | BE 36 A | 25-34        | 30    | 27       | 16/20    | TP08/<br>M2.2 |
|                        | BE 34 A | 27-36        |       |          |          |               |
|                        | BE 32 A | 29-38        |       |          |          |               |
|                        | BE 30 A | 31-40        |       |          |          |               |
|                        | BE 28 A | 33-42        |       |          |          |               |
|                        | BE 26 A | 35-44        |       |          |          |               |
|                        | BE 24 A | 37-46        |       |          |          |               |
|                        | BE 22 A | 39-48        |       |          |          |               |
|                        | BE 20 A | 41-50        |       |          |          |               |
|                        | BE 18 A | 43-52        |       |          |          |               |

CBR20, CBR30 专用加长连接杆

| 订货型号      | 适用搪孔头       | 杆长 L | 有效深 Z | 结合牙 M |
|-----------|-------------|------|-------|-------|
| CBRM10-34 | BE18A-BE36A | 34   | 61    | M10   |
| CBRM10-64 |             | 64   | 91    |       |

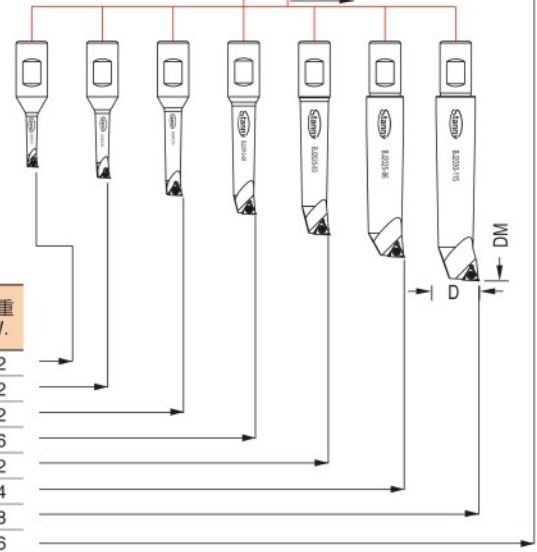


NBH2084 微调精鏜孔系统 (φ 8-280)

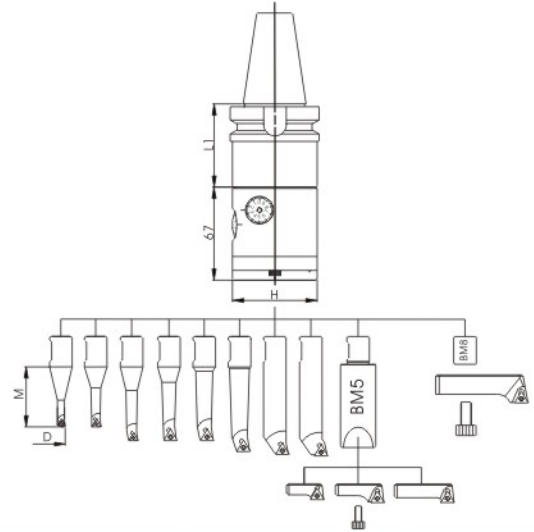


| 订货型号     | 规格           | 范围 D<br>øDmin-øDmax | 组合系统-主轴柄规格              | 净重<br>N.W. |
|----------|--------------|---------------------|-------------------------|------------|
| 20908808 | R8-NBH2084   | 8-280               | R8-UNF7/16-20-NBH2084   | 10.0       |
| 20900308 | NT30-NBH2084 | 8-280               | DIN2080 ISO30-NBH2084   | 9.8        |
| 20900408 | NT40-NBH2084 | 8-280               | DIN2080 ISO40-NBH2084   | 10.3       |
| 20900510 | NT50-NBH2084 | 8-280               | DIN2080 ISO50-NBH2084   | 10.8       |
| 20906408 | MT4-NBH2084  | 8-280               | DIN228A MT4-NBH2084     | 10.3       |
| 20906508 | MT5-NBH2084  | 8-280               | DIN228A MT5-NBH2084     | 10.8       |
| 20901410 | BT40-NBH2084 | 8-280               | MAS403 BT40-NBH2084     | 9.0        |
| 20901510 | BT50-NBH2084 | 8-280               | MAS403 BT50-NBH2084     | 11.7       |
| 20902410 | SK40-NBH2084 | 8-280               | DIN69871A ISO40-NBH2084 | 10.7       |
| 20902510 | SK50-NBH2084 | 8-280               | DIN69871A ISO50-NBH2084 | 13.0       |

| 订货型号     | 精搪孔刀杆      | 范围 D<br>øDmin-øDmax | 深度<br>DM | 刀片          | 螺丝          | 板手 | 净重<br>N.W. |
|----------|------------|---------------------|----------|-------------|-------------|----|------------|
| 20010832 | BJ2008-32  | 8-11                | 32       | TBGT0601..L | SB-1STR-M2  | T6 | 0.12       |
| 20011040 | BJ2010-40  | 10-13               | 40       |             |             |    | 0.12       |
| 20011253 | BJ2012-53  | 12-17               | 53       | TPGH0902..L | SB-2TR-M2.5 | T8 | 0.12       |
| 20011668 | BJ2016-68  | 16-21               | 68       |             |             |    | 0.16       |
| 20012083 | BJ2020-83  | 20-125              | 83       | TPGH1103..L | SB-3TR-M3   | T8 | 0.22       |
| 20012596 | BJ2025-96  | 25-130              | 96       |             |             |    | 0.24       |
| 20013011 | BJ2030-115 | 30-135              | 115      |             |             |    | 0.38       |
| 20012020 | BJ2020-L   | 120-280             | 84+BT L1 |             |             |    | 0.46       |
|          |            |                     |          |             |             |    |            |



EBOR48/60極細微調精鏢組合(套裝)



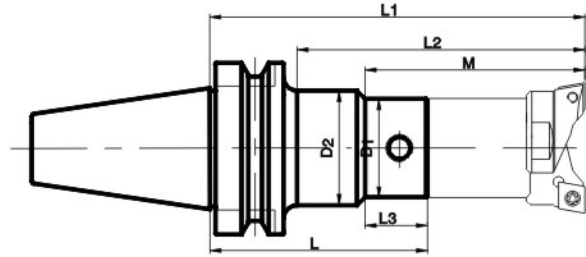
| 訂貨型號              | 鏢孔範圍<br>ØD         | 刀柄型號               | L1           | H  |
|-------------------|--------------------|--------------------|--------------|----|
| BT30-EBOR48       | 6-90               | BT30-ECK4-45       | 45           | 48 |
| BT40-EBOR48       |                    | BT40-ECK4-60       | 60           |    |
| BT50-EBOR48       |                    | BT50-ECK4-75       | 75           |    |
| SK40-EBOR48       |                    | SK40-ECK4-65       | 65           |    |
| SK50-EBOR48       |                    | SK50-ECK4-75       | 75           |    |
| DIN2080-40-EBOR48 |                    | DIN2080-40-ECK4-60 | 60           |    |
| DIN2080-50-EBOR48 |                    | DIN2080-50-ECK4-60 | 60           |    |
| HSK-A63-EBOR48    |                    | HSK-A63-ECK4-75    | 75           |    |
| HSK-A100-EBOR48   |                    | HSK-A100-ECK4-75   | 75           |    |
| BT40-EBOR60       |                    | 6-150              | BT40-ECK5-60 |    |
| BT50-EBOR60       | BT50-ECK5-75       |                    | 75           |    |
| SK40-EBOR60       | SK40-ECK5-65       |                    | 65           |    |
| SK50-EBOR60       | SK50-ECK5-75       |                    | 75           |    |
| DIN2080-40-EBOR60 | DIN2080-40-ECK5-60 |                    | 60           |    |
| DIN2080-50-EBOR60 | DIN2080-50-ECK5-75 |                    | 75           |    |
| HSK-A63-EBOR60    | HSK-A63-ECK5-75    |                    | 75           |    |
| HSK-A100-EBOR60   | HSK-A100-ECK5-75   |                    | 75           |    |

| 鏢刀杆規格      | 鏢孔範圍<br>ØD | 深度<br>M                          | 刀片規格<br>Insert type | 刀片螺絲       | 扳手 | 切入量<br>ap | 進給量<br>F  |
|------------|------------|----------------------------------|---------------------|------------|----|-----------|-----------|
| BR1606-20  | 6-9        | 20                               | WBGT060102L         | CSTB-2     | T6 | 0.05-0.2  | 0.05-0.1  |
| BR1608-28  | 8-11       | 28                               | TBGT060102L         |            |    | 0.05-0.2  | 0.05-0.1  |
| BR1610-36  | 10-13      | 36                               | TBGT060104L         |            |    | 0.1-0.25  | 0.07-0.15 |
| BR1612-42  | 12-15      | 42                               | TPGT090202L         | CSTB-2.5   | T8 | 0.05-0.2  | 0.05-0.1  |
| BR1614-50  | 14-17      | 50                               |                     |            |    | 0.1-0.25  | 0.07-0.15 |
| BR1616-60  | 16-20      | 60                               | TPGT090204L         | CSTB-2.5   | T8 | 0.05-0.2  | 0.05-0.1  |
| BR1620-63  | 20-24      | 63                               |                     |            |    | 0.1-0.25  | 0.07-0.15 |
| BR1624-64  | 24-28      | 64                               |                     |            |    |           |           |
| BM5        |            | 60+ SRTP2838/ SRTP3652/ SRTP4470 |                     | M5 x 12CAP | 4  | 0.05-0.2  | 0.05-0.1  |
| SRTP2838   | 28-38      | +10                              | TPGT090202L         | CSTB-2.5   | T8 |           |           |
| SRTP3652   | 36-52      | +12                              |                     |            |    |           |           |
| SRTP4470   | 44-70      | +12                              | TPGT090204L         |            |    | 0.1-0.25  | 0.07-0.15 |
| BM8        |            |                                  |                     | M8 x 16CAP | 6  | 0.1-0.25  | 0.07-0.15 |
| SRTP5890   | 58-90      | +20                              | TPGT090204L         | CSTB-2.5   | T8 |           |           |
| SRTP70110  | 70-110     | +20                              | TPGT090202L         | CSTB-2.5   | T8 | 0.05-0.2  | 0.05-0.1  |
| SRTP110150 | 110-150    | +20                              | TPGT090204L         |            |    | 0.1-0.25  | 0.07-0.15 |

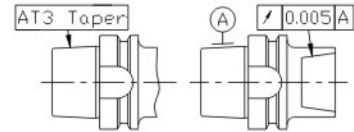
▲ 以上規格為整套組合，也可單獨訂購刀柄及刀杆，請在訂購時注明具體規格！



## ECK鏢刀刀柄-BT柄



※所有鏢刀刀柄系列產品均採用模組化的接口設計，端面採用特殊的角度設計，使鏢刀頭裝配時能很緊密地與刀柄本體連接在一起，從而達到高剛性。

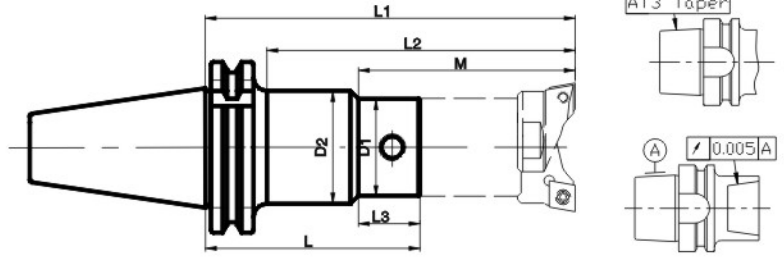
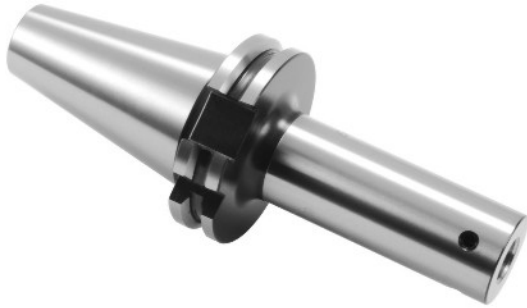


| 訂貨型號          | ∅ D1 | ∅ D2 | M   | L   | L1  | L2   | L3  | 重量  |     |
|---------------|------|------|-----|-----|-----|------|-----|-----|-----|
| BT30-ECK1-60  | 23   | —    | 73  | 60  | 100 | 73   | —   | 0.5 |     |
| -ECK2-100     | 29   |      | 118 | 100 | 145 | 118  |     | 0.8 |     |
| -ECK3-100     | 37   |      | 108 | 100 | 155 | 108  |     | 1.0 |     |
| ECK4-100      | 48   |      | 113 | 100 | 160 | 113  |     | 1.2 |     |
| BT40-ECK1-60  | 23   | —    | 68  | 60  | 100 | 68   | —   | 1.1 |     |
| -80           |      |      | 88  | 80  | 120 | 88   |     | 1.2 |     |
| -100          |      |      | 100 | 100 | 140 | 108  |     | 60  | 1.2 |
| -ECK2-80      | 29   | —    | 93  | 80  | 125 | 93   | —   | 1.2 |     |
| -100          |      |      | 113 | 100 | 145 | 113  |     | 1.3 |     |
| -125          |      |      | 121 | 125 | 170 | 138  |     | 76  | 1.5 |
| -ECK3-100     | 37   | —    | 123 | 100 | 155 | 123  | —   | 1.5 |     |
| -125          |      |      | 148 | 125 | 180 | 148  |     | 1.7 |     |
| -ECK4-100     |      |      | 48  | —   | 128 | 100  |     | 160 | 128 |
| -125          | 153  | 125  |     |     | 185 | 153  | 2.1 |     |     |
| -ECK5-100     | 60   | —    |     |     | 143 | 100  | 175 | 143 | 2.1 |
| -125          |      |      | 168 | 125 | 200 | 168  | 2.8 |     |     |
| -ECK6-100     | 80   | —    | 158 | 100 | 190 | 158  | —   | 2.9 |     |
| BT50-ECK1-100 | 23   |      | 97  | 100 | 140 | 97   |     | —   | 3.8 |
| -ECK2-100     | 29   |      | 102 | 100 | 145 | 102  |     |     | 3.9 |
| -125          |      |      | 127 | 125 | 170 | 127  |     |     | 4.0 |
| -ECK3-100     | 37   |      | 112 | 100 | 155 | 112  |     |     | 4.0 |
| -125          |      |      | 137 | 125 | 180 | 137  |     |     | 4.2 |
| -150          |      |      | 162 | 150 | 205 | 162  |     |     | 4.5 |
| -ECK4-100     | 48   |      | 117 | 100 | 160 | 117  |     |     | 4.2 |
| -150          |      |      | 167 | 150 | 210 | 167  |     |     | 5.1 |
| -200          |      |      | 217 | 200 | 260 | 217  |     |     | 5.4 |
| -ECK5-150     | 60   |      | 182 | 150 | 225 | 182  |     |     | 5.2 |
| -200          |      |      | 232 | 200 | 275 | 232  |     |     | 6.5 |
| -250          |      | 282  | 250 | 325 | 282 | 7.3  |     |     |     |
| -300          |      | 332  | 300 | 375 | 332 |      |     |     |     |
| -350          | 382  | 350  | 425 | 382 |     |      |     |     |     |
| -ECK6-150     | 80   | 197  | 150 | 240 | 197 | 7.1  |     |     |     |
| -200          |      | 247  | 200 | 290 | 247 | 8.5  |     |     |     |
| -250          |      | 297  | 250 | 340 | 297 | 9.9  |     |     |     |
| -300          |      | 347  | 300 | 390 | 347 | 11.3 |     |     |     |

★ 以上所有規格鏢刀刀柄均不含鏢刀頭及拉釘，如有需要請另外訂購。

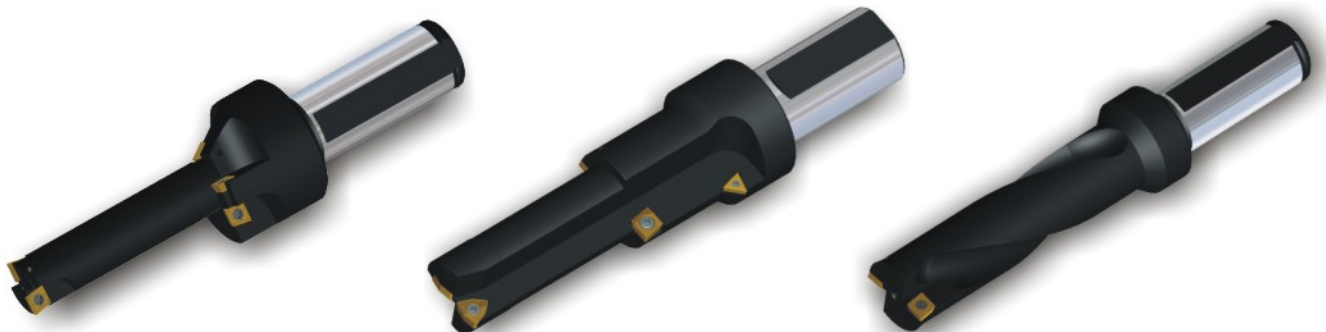
★ 當加工孔深超過直徑的4倍時，請選用ECK抗震深孔鏢刀柄。

ECK鏢刀刀柄-SK柄



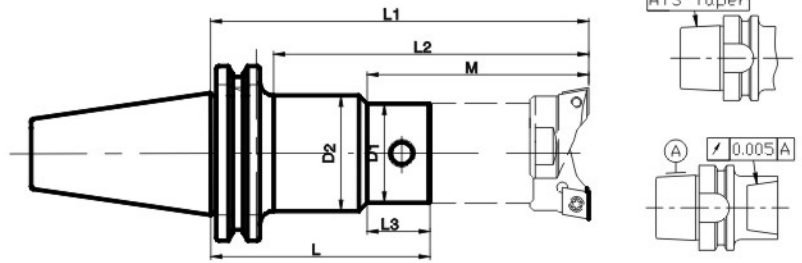
| 訂貨型號          | øD1 | øD2 | M   | L   | L1  | L2  | L3 | 重量   |
|---------------|-----|-----|-----|-----|-----|-----|----|------|
| SK40-ECK1-60  | 23  | 36  | 76  | 60  | 100 | 76  | 60 | 0.9  |
| -80           |     |     | 96  | 80  | 120 | 96  |    | 1.0  |
| -100          |     |     | 100 | 100 | 140 | 116 |    | 1.1  |
| -ECK2-80      | 29  | 40  | 101 | 80  | 125 | 101 | 81 | 1.0  |
| -100          |     |     | 121 | 100 | 145 | 121 |    | 1.2  |
| -125          |     |     | 126 | 125 | 170 | 146 |    | 1.4  |
| -ECK3-100     | 37  | 40  | 131 | 100 | 155 | 131 | 81 | 1.4  |
| -125          |     |     | 156 | 125 | 180 | 156 |    | 1.5  |
| -ECK4-100     | 48  | 40  | 136 | 100 | 160 | 136 | 81 | 1.7  |
| -125          |     |     | 161 | 125 | 185 | 161 |    | 1.9  |
| -ECK5-100     | 60  | 40  | 151 | 100 | 175 | 151 | 81 | 1.9  |
| -125          |     |     | 176 | 125 | 200 | 176 |    | 2.5  |
| -ECK6-100     | 80  | 40  | 166 | 100 | 190 | 166 | 81 | 2.7  |
| SK50-ECK1-125 | 23  | 36  | 100 | 125 | 165 | 141 | 60 | 3.1  |
| -ECK2-100     | 29  | 36  | 121 | 100 | 145 | 121 | 60 | 3.0  |
| -125          |     |     | 146 | 125 | 170 | 146 |    | 3.1  |
| -ECK3-100     | 37  | 36  | 131 | 100 | 155 | 131 | 60 | 3.2  |
| -125          |     |     | 156 | 125 | 180 | 156 |    | 3.3  |
| -150          |     |     | 181 | 150 | 205 | 181 |    | 3.6  |
| -ECK4-100     | 48  | 36  | 136 | 100 | 160 | 136 | 60 | 3.3  |
| -150          |     |     | 186 | 150 | 210 | 186 |    | 4.2  |
| -200          |     |     | 236 | 200 | 260 | 236 |    | 5.0  |
| -ECK5-150     | 60  | 36  | 201 | 150 | 225 | 201 | 60 | 4.8  |
| -200          |     |     | 251 | 200 | 275 | 251 |    | 6.2  |
| -250          |     |     | 301 | 250 | 325 | 301 |    | 7.2  |
| -ECK6-150     | 80  | 36  | 216 | 150 | 240 | 216 | 60 | 6.5  |
| -200          |     |     | 266 | 200 | 290 | 266 |    | 8.8  |
| -250          |     |     | 316 | 250 | 340 | 316 |    | 10.6 |

★ 以上所有規格鏢刀刀柄均不含鏢刀頭及拉釘，如有需要請另外訂購。





ECK鏢刀刀柄CAT柄

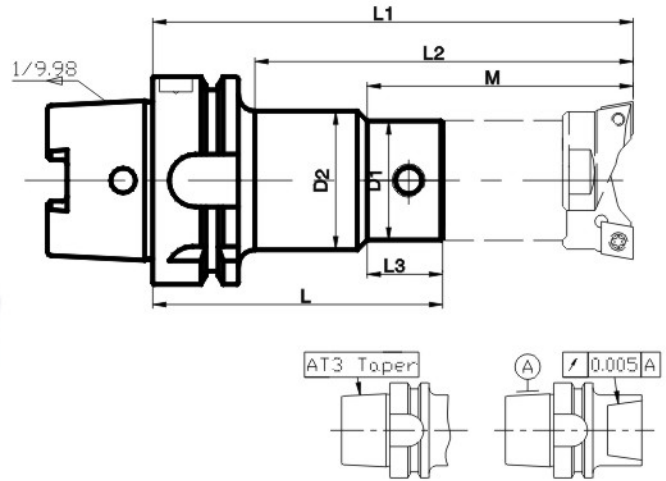


| 訂貨型號             | ∅D1   | ∅D2   | M      | L     | L1     | L2     | L3    | 重量   |
|------------------|-------|-------|--------|-------|--------|--------|-------|------|
| CAT40-ECK1-2.36" | 0.906 | 1.417 | 2.992  | 2.36  | 3.937  | 2.992  | 2.362 | 0.9  |
| -3.15"           |       |       | 3.780  | 3.15  | 4.724  | 3.780  |       | 1.0  |
| -3.94"           |       |       | 3.937  | 3.94  | 5.512  | 4.173  |       | 1.1  |
| -ECK2-3.15"      | 1.142 | 1.575 | 3.976  | 3.15  | 4.921  | 3.976  | 3.189 | 1.0  |
| -3.94"           |       |       | 4.764  | 3.94  | 5.709  | 4.764  |       | 1.2  |
| -4.92"           |       |       | 4.960  | 4.92  | 6.693  | 5.748  |       | 1.4  |
| -ECK3-3.94"      | 1.457 |       | 5.157  | 3.94  | 6.102  | 5.157  |       | 1.4  |
| -4.92"           |       |       | 6.142  | 4.92  | 7.087  | 6.142  |       | 1.5  |
| -ECK4-3.94"      |       |       | 5.354  | 3.94  | 6.299  | 5.354  |       | 1.7  |
| -4.92"           | 6.339 | 4.92  | 7.283  | 6.339 | 1.9    |        |       |      |
| -ECK5-3.94"      | 2.362 |       | 5.945  | 3.94  | 6.900  | 5.945  |       | 1.9  |
| -4.92"           |       |       | 6.929  | 4.92  | 7.874  | 6.929  |       | 2.4  |
| -ECK6-3.94"      | 3.150 | 1.417 | 6.535  | 3.94  | 7.480  | 6.535  | 2.362 | 2.7  |
| CAT50-ECK1-4.92" | 0.906 |       | 3.937  | 4.92  | 6.496  | 5.551  |       | 3.1  |
| -ECK2-3.94"      | 1.142 |       | 4.764  | 3.94  | 5.709  | 4.764  |       | 2.9  |
| -4.92"           |       |       | 5.748  | 4.92  | 6.693  | 5.748  |       | 3.1  |
| -ECK3-3.94"      | 1.457 |       | 5.157  | 3.94  | 6.102  | 5.157  |       | 3.2  |
| -4.92"           |       |       | 6.142  | 4.92  | 7.087  | 6.142  |       | 3.3  |
| -5.91"           |       |       | 7.126  | 5.91  | 8.071  | 7.126  |       | 3.6  |
| -ECK4-3.94"      | 1.900 |       | 5.354  | 3.94  | 6.299  | 5.354  |       | 3.3  |
| -5.91"           |       |       | 7.323  | 5.91  | 8.268  | 7.323  |       | 4.1  |
| -7.87"           |       |       | 9.291  | 7.87  | 10.236 | 9.291  |       | 5.0  |
| -ECK5-5.91"      | 2.362 |       | 7.913  | 5.91  | 8.858  | 7.913  |       | 4.8  |
| -7.87"           |       |       | 9.882  | 7.87  | 10.827 | 9.882  |       | 6.2  |
| -9.84"           |       |       | 11.850 | 9.84  | 12.795 | 11.850 |       | 7.2  |
| -ECK6-5.91"      | 3.150 |       | 8.504  | 5.91  | 9.449  | 8.504  |       | 6.8  |
| -7.87"           |       |       | 10.472 | 7.87  | 11.417 | 10.472 |       | 8.7  |
| -9.84"           |       |       | 12.441 | 9.84  | 13.386 | 12.441 |       | 10.6 |

★ 以上所有規格鏢刀刀柄均不含鏢刀頭及拉釘，如有需要請另外訂購。

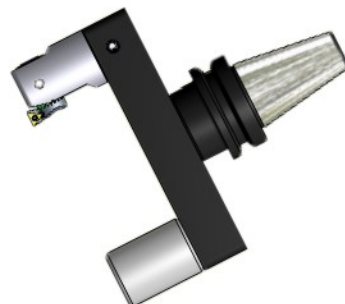


ECK鏢刀刀柄-HSK柄



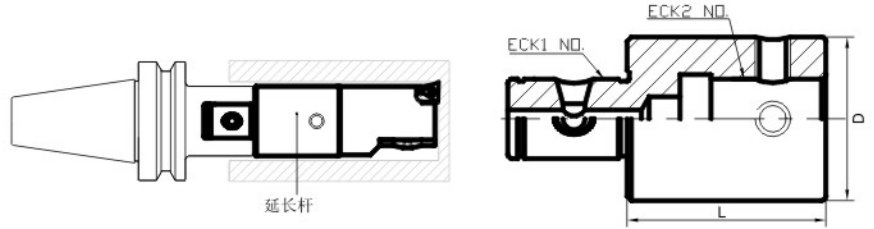
| 訂貨型號              | ØD1 | ØD2 | M   | L   | L1  | L2  | L3 | 重量(Kg) |
|-------------------|-----|-----|-----|-----|-----|-----|----|--------|
| HSK-A63-ECK1-100  | 23  | 36  | 100 | 100 | 140 | 109 | 60 | 0.8    |
| -ECK2-100         | 29  | —   | 114 | 100 | 145 | 114 | —  | 1.0    |
| -125              |     | 40  | 121 | 125 | 170 | 139 | 76 | 1.2    |
| -ECK3-100         | 37  | —   | 128 | 100 | 155 | 128 | —  | 1.2    |
| -125              |     |     | 149 | 125 | 180 | 149 |    | 1.4    |
| -ECK4-100         | 48  | —   | 129 | 100 | 160 | 129 | —  | 1.5    |
| -125              |     |     | 153 | 125 | 185 | 153 |    | 1.8    |
| -ECK5-100         | 60  | —   | 144 | 100 | 175 | 144 | —  | 1.7    |
| -125              |     |     | 169 | 125 | 200 | 169 |    | 2.2    |
| HSK-A100-ECK1-125 | 23  | 36  | 100 | 125 | 165 | 131 | 60 | 2.3    |
| -ECK2-125         | 29  | 40  | 121 | 125 | 170 | 136 | 76 | 2.5    |
| -150              |     |     | 121 | 150 | 195 | 161 |    | 2.7    |
| -ECK3-100         | 37  | —   | 121 | 100 | 155 | 121 | —  | 2.5    |
| -125              |     |     | 146 | 125 | 180 | 146 |    | 2.7    |
| -150              |     |     | 171 | 150 | 205 | 171 |    | 2.9    |
| -ECK4-100         | 48  | —   | 126 | 100 | 210 | 126 | —  | 2.8    |
| -150              |     |     | 176 | 150 | 210 | 176 |    | 3.4    |
| -200              |     |     | 226 | 200 | 260 | 226 |    | 4.1    |
| -ECK5-150         | 60  | —   | 191 | 150 | 225 | 191 | —  | 4.2    |
| -200              |     |     | 241 | 200 | 275 | 241 |    | 5.3    |
| -250              |     |     | 291 | 250 | 325 | 291 |    | 6.5    |
| -ECK6-150         | 80  | —   | 206 | 150 | 240 | 206 | —  | 5.7    |
| -200              |     |     | 256 | 200 | 290 | 256 |    | 6.8    |
| -250              |     |     | 306 | 250 | 340 | 306 |    | 8.1    |

★ 以上所有規格鏢刀刀柄均不含鏢刀頭及冷却水管，如有需要請另外訂購。



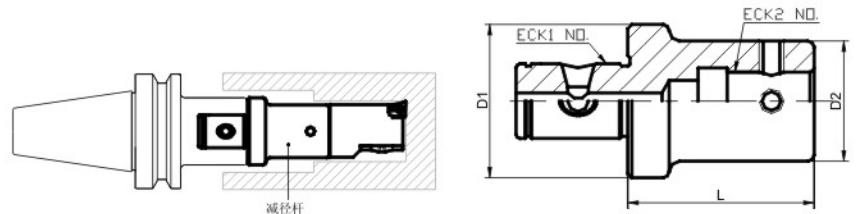


## 鏜刀延長杆



| 訂貨型號      | ECK1 No . | ECK2 No . | L  | Ø D |
|-----------|-----------|-----------|----|-----|
| ECK0-0-35 | 0         | 0         | 35 | 21  |
| ECK1-1-45 | 1         | 1         | 45 | 23  |
| ECK2-2-45 | 2         | 2         | 45 | 29  |
| ECK3-3-45 | 3         | 3         | 45 | 37  |
| ECK4-4-45 | 4         | 4         | 45 | 48  |
| ECK5-5-75 | 5         | 5         | 75 | 60  |
| ECK6-6-75 | 6         | 6         | 75 | 80  |

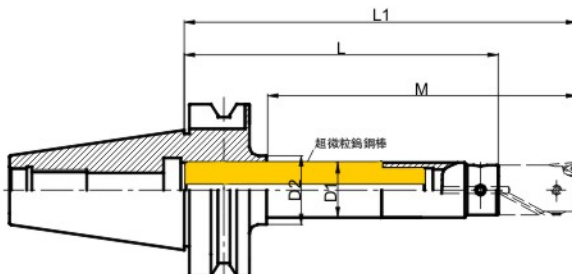
## 鏜刀減徑杆



| 訂貨型號       | ECK1 No . | ECK2 No . | L   | Ø D1 | Ø D2 |
|------------|-----------|-----------|-----|------|------|
| ECK1-0-35  | 1         | 0         | 35  | 23   | 21   |
| ECK2-0-35  | 2         | 0         | 35  | 29   | 21   |
| ECK2-1-45  | 2         | 1         | 45  | 29   | 23   |
| ECK3-1-45  | 3         | 1         | 45  | 37   | 23   |
| ECK3-2-45  |           | 2         |     |      | 29   |
| ECK4-2-45  | 4         | 2         | 45  | 48   | 29   |
| ECK4-3-45  |           | 3         |     |      | 37   |
| ECK5-3-75  | 5         | 3         | 75  | 60   | 37   |
| ECK5-4-75  |           | 4         |     |      | 48   |
| ECK6-4-100 | 6         | 4         | 100 | 80   | 48   |
| ECK6-5-100 |           | 5         |     |      | 60   |

## 抗震深孔鏜刀刀柄

- ▶ 采用進口超微粒硬質合金棒，抗震性好。
- ▶ 中心出水設計，可提高刀具使用壽命。
- ▶ ECK模塊化接口設計。
- ▶ 最大可加工深度L/D=6倍。

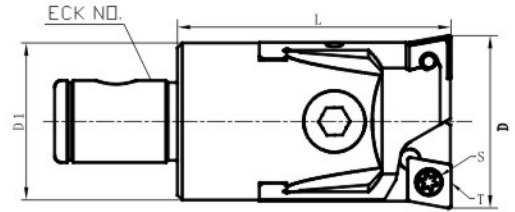
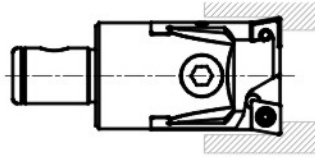


| 訂貨型號          | Ø D1 | Ø D2 | M   | L   | L1  |
|---------------|------|------|-----|-----|-----|
| BT40-ECK1-145 | 25   | 33   | 150 | 145 | 185 |
| BT40-ECK2-190 | 32   | 42   | 192 | 190 | 235 |
| BT50-ECK1-155 | 25   | 33   | 150 | 155 | 195 |
| BT50-ECK2-185 | 32   | 42   | 195 | 185 | 230 |
| BT50-ECK3-230 | 40   | 50   | 240 | 230 | 285 |
| BT50-ECK4-295 | 50   | 60   | 300 | 295 | 355 |

CTB粗鏢頭(標準型)

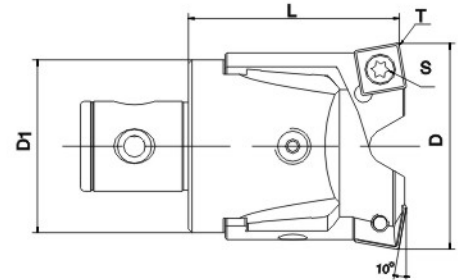


專利產品



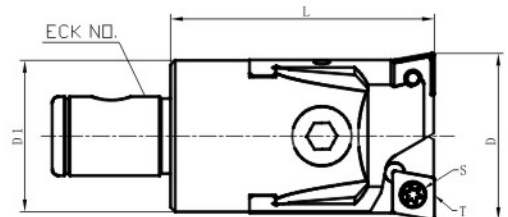
| 訂貨型號       | ECK No. | øD1 | L  | 加工直徑<br>øD | 刀片 T     | 刀片鎖緊<br>螺釘 S | 刀片座          | 調節<br>螺絲 | 調節<br>扳手 | 鎖緊<br>螺絲 | 鎖緊<br>扳手 | 刀片螺<br>釘扳手 |
|------------|---------|-----|----|------------|----------|--------------|--------------|----------|----------|----------|----------|------------|
| CTB22-28   | 0       | 21  | 40 | 22-28      | CC□□0602 | CSTB-2.5     | CTB22-28HK   | TM3-7L   | 1.5mm    | CTBSM5   | 4mm      | T8         |
| CTB27-35   | 1       | 23  | 40 | 27-35      | CC□□0602 | CSTB-2.5     | CTB27-35HK   | TM3-8L   | 1.5mm    | CTBSM5   | 4mm      | T8         |
| CTB34-44   | 2       | 29  | 45 | 34-44      | CC□□09T3 | CSTB-4       | CTB34-44HK   | TM4-10L  | 2mm      | CTBSM6   | 5mm      | T15        |
| CTB43-55   | 3       | 37  | 55 | 43-55      | CC□□1204 | CSTB-5       | CTB43-55HK   | TM5-12L  | 2.5mm    | CTBSM8   | 6mm      | T20        |
| CTB54-76   | 4       | 48  | 60 | 54-76      | CC□□1204 | CSTB-5       | CTB54-76HK   | TM6-16L  | 3mm      | CTBSM10  | 8mm      | T20        |
| CTB75-105  | 5       | 60  | 75 | 75-105     | CC□□1204 | CSTB-5       | CTB75-105HK  | TM8-20L  | 4mm      | CTBSM12  | 10mm     | T20        |
| CTB104-150 | 6       | 80  | 90 | 104-150    | CC□□1204 | CSTB-5       | CTB104-150HK | TM8-27L  | 4mm      | CTBSM16  | 14mm     | T20        |

CTB粗鏢頭(通孔型)



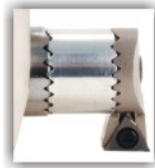
| 訂貨型號        | ECK No. | øD1 | L  | 加工直徑<br>øD | 刀片 T     | 刀片鎖緊螺釘 S |
|-------------|---------|-----|----|------------|----------|----------|
| CTB22-28 A  | 0       | 21  | 38 | 22-28      | SC□□0702 | CSTB-2.5 |
| CTB27-35 A  | 1       | 23  | 38 | 27-35      | SC□□0702 | CSTB-2.5 |
| CTB34-44 A  | 2       | 29  | 43 | 34-44      | SC□□09T3 | CSTB-4   |
| CTB43-55 A  | 3       | 37  | 53 | 43-55      | SC□□1204 | CSTB-5   |
| CTB54-76 A  | 4       | 48  | 58 | 54-76      | SC□□1204 | CSTB-5   |
| CTB75-105 A | 5       | 60  | 73 | 75-105     | SC□□1204 | CSTB-5   |
| CTB104-150A | 6       | 80  | 88 | 104-150    | SC□□1204 | CSTB-5   |

CTB粗鏢頭(段差型)

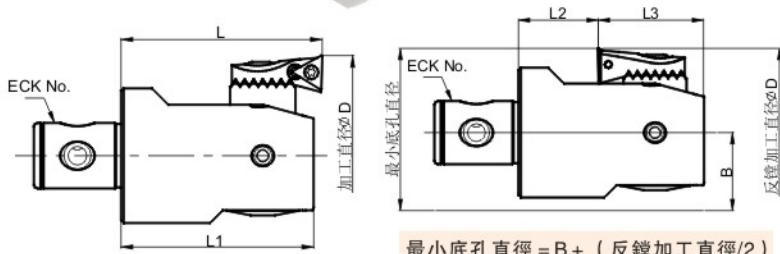


| 訂貨型號         | ECK No. | øD1 | L  | 加工直徑<br>øD | 刀片 T     | 刀片鎖緊螺釘 S |
|--------------|---------|-----|----|------------|----------|----------|
| CTB22-28 S   | 0       | 21  | 40 | 22-28      | CC□□0602 | CSTB-2.5 |
| CTB27-35 S   | 1       | 23  | 40 | 27-35      | CC□□0602 | CSTB-2.5 |
| CTB34-44 S   | 2       | 29  | 45 | 34-44      | CC□□09T3 | CSTB-4   |
| CTB43-55 S   | 3       | 37  | 55 | 43-55      | CC□□1204 | CSTB-5   |
| CTB54-76 S   | 4       | 48  | 60 | 54-76      | CC□□1204 | CSTB-5   |
| CTB75-105 S  | 5       | 60  | 75 | 75-105     | CC□□1204 | CSTB-5   |
| CTB104-150 S | 6       | 80  | 90 | 104-150    | CC□□1204 | CSTB-5   |

FBN精鏢頭

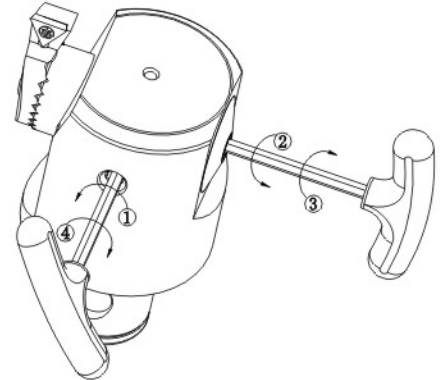


更換墊片可增大加工範圍



調整方法

1. 逆時針鬆開鎖緊螺絲。
2. 逆時針轉動刻度盤，調至略小于要加工的直徑。
3. 順時針轉動刻度盤，調至所需加工直徑。  
1小格 = 0.01mm, (由大往小調整時先調至比加工尺寸略小，再回調至所需尺寸。)
4. 順時針鎖緊螺絲。



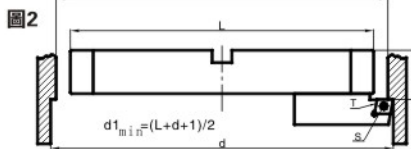
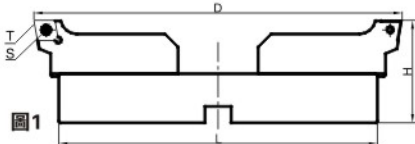
| 訂貨型號           | ECK No. | 刀片座  | 墊片      | 刀片座鎖緊螺絲 | 正鏢      |    |    | 反鏢      |      |      | 重量 Kg | 鎖緊力矩 |           |
|----------------|---------|------|---------|---------|---------|----|----|---------|------|------|-------|------|-----------|
|                |         |      |         |         | 加工範圍 ØD | L  | L1 | 加工範圍 ØD | L2   | L3   |       |      | B         |
| FBN22-28ECK0   | 0       | FIH0 | —       | FSM405  | 22-28   | 42 | 38 | 26-28   | 12   | 27   | 11    | 0.1  | 10kgf/cm  |
|                |         |      | FIH0P2  | FSM407  | 26-32   |    |    | 26-31   |      |      |       |      |           |
|                |         |      | FIH0P4  | FSM409  | 30-36   |    |    | 30-35   |      |      |       |      |           |
| FBN27-35ECK1   | 1       | FIH1 | —       | FSM406  | 27-35   | 42 | 38 | 30-35   | 12   | 27   | 12    | 0.12 | 15kgf/cm  |
|                |         |      | FIH1P3  | FSM409  | 34-42   |    |    | 34-42   |      |      |       |      |           |
|                |         |      | FIH1P6  | FSM412  | 40-47   |    |    | 39-47   |      |      |       |      |           |
| FBN34-44ECK2   | 2       | FIH2 | —       | FSM406  | 34-44   | 46 | 43 | 36-44   | 18   | 25   | 15    | 0.15 | 15kgf/cm  |
|                |         |      | FIH2P4  | FSM410  | 42-55   |    |    | 42-52   |      |      |       |      |           |
|                |         |      | FIH2P8  | FSM416  | 50-60   |    |    | 50-60   |      |      |       |      |           |
| FBN43-55ECK3   | 3       | FIH3 | —       | FSM508  | 43-55   | 55 | 53 | 45-55   | 22.5 | 30.5 | 19    | 0.19 | 25kgf/cm  |
|                |         |      | FIH3P5  | FSM512  | 53-66   |    |    | 53-66   |      |      |       |      |           |
|                |         |      | FIH3P10 | FSM517  | 63-76   |    |    | 63-76   |      |      |       |      |           |
| FBN54-76ECK4   | 4       | FIH4 | —       | FSM608  | 54-76   | 60 | 55 | 57-76   | 24.5 | 38   | 24.5  | 0.8  | 60kgf/cm  |
|                |         |      | FIH4P6  | FSM614  | 66-88   |    |    | 66-88   |      |      |       |      |           |
|                |         |      | FIH4P12 | FSM620  | 78-100  |    |    | 78-100  |      |      |       |      |           |
| FBN75-105ECK5  | 5       | FIH5 | —       | FSM810  | 75-105  | 75 | 70 | 75-105  | 24.5 | 44.5 | 30.5  | 1.7  | 100kgf/cm |
|                |         |      | FIH5P13 | FSM825  | 101-131 |    |    | 101-131 |      |      |       |      |           |
|                |         |      | FIH5P25 | FSM835  | 125-155 |    |    | 125-155 |      |      |       |      |           |
| FBN104-150ECK6 | 6       | FIH5 | —       | FSM810  | 104-150 | 90 | 85 | 104-150 | 39.5 | 45.5 | 40.5  | 3.5  | 100kgf/cm |
|                |         |      | FIH5P13 | FSM825  | 130-176 |    |    | 130-176 |      |      |       |      |           |
|                |         |      | FIH5P25 | FSM835  | 154-200 |    |    | 154-200 |      |      |       |      |           |

| 訂貨型號           | 鎖緊螺絲    | 鎖緊螺絲扳手 | 刀片螺絲    | 刀片螺絲扳手 | 刀片                   |
|----------------|---------|--------|---------|--------|----------------------|
| FBN22-28ECK0   | FLS505  | 2.5    | CSTB2   | T6     | TP□□0802             |
| FBN27-35ECK1   | FLS506  |        |         |        |                      |
| FBN34-44ECK2   | FLS508  |        |         |        |                      |
| FBN43-55ECK3   | FLS610  | 3      | CSTB2.5 | T8     | TC□□1102<br>TP□□0902 |
| FBN54-76ECK4   | FLS812  | 4      |         |        |                      |
| FBN75-105ECK5  | FLS1015 | 5      |         |        |                      |
| FBN104-150ECK6 |         |        |         |        |                      |

▲FBN43-55ECK3以上有兩種刀片座可選擇，定購時請注明！定貨說明：FBN43-55ECK3TP09 使用TP□□0902刀片。  
FBN43-55ECK3TC11 使用TC□□1102刀片。

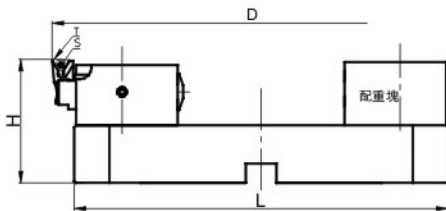


## 大範圍粗鏢刀頭

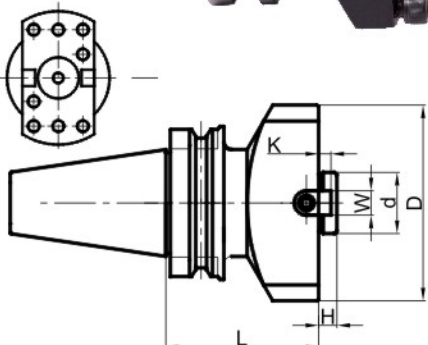


★上表中F系列為反鏢規格(圖2)

| 訂貨型號         | ECK No. | L   | H  | 加工直徑<br>ØD | 刀片<br>T    | 刀片螺絲<br>S | 圖號<br>FIG | 重量Kg |
|--------------|---------|-----|----|------------|------------|-----------|-----------|------|
| LERB150-205  | 7       | 145 | 65 | 150-205    | CCMT120408 | CSTB-5    | FIG1      | 2.4  |
| LERB200-255  |         | 195 | 65 | 200-255    |            |           |           | 3.2  |
| LERB250-305  |         | 245 | 70 | 250-305    |            |           |           | 4.6  |
| LERB300-355  |         | 295 | 70 | 300-355    |            |           |           | 5.4  |
| LERB350-405  |         | 345 | 75 | 350-405    |            |           |           | 7.2  |
| LERB400-455  |         | 395 | 75 | 400-455    |            |           |           | 8.1  |
| LERB450-505  |         | 445 | 80 | 450-505    |            |           |           | 10.3 |
| LERB150-205F | 7       | 145 | 35 | 150-205    | CCMT120408 | CSTB-5    | FIG2      | 2.0  |
| LERB200-255F |         | 195 | 35 | 200-255    |            |           |           | 2.8  |
| LERB250-305F |         | 245 | 40 | 250-305    |            |           |           | 4.2  |
| LERB300-355F |         | 295 | 40 | 300-355    |            |           |           | 4.9  |
| LERB350-405F |         | 345 | 45 | 350-405    |            |           |           | 6.8  |
| LERB400-455F |         | 395 | 45 | 400-455    |            |           |           | 7.7  |
| LERB450-505F |         | 445 | 50 | 450-505    |            |           |           | 9.9  |

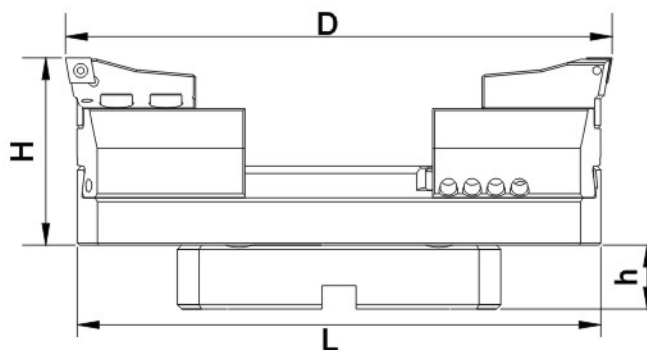




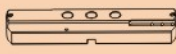
| 訂貨型號        | ECK No. | L   | H  | 加工直徑<br>ØD | 刀片<br>T    | 刀片螺絲<br>S | 重量Kg |
|-------------|---------|-----|----|------------|------------|-----------|------|
| LEFB150-205 | 7       | 145 | 65 | 150-205    | TPGT090202 | CSTB2.5   | 2.9  |
| LEFB200-255 |         | 195 | 65 | 200-255    |            |           | 3.7  |
| LEFB250-305 |         | 245 | 70 | 250-305    |            |           | 5.1  |
| LEFB300-355 |         | 295 | 70 | 300-355    |            |           | 5.9  |
| LEFB350-405 |         | 345 | 75 | 350-405    |            |           | 7.7  |
| LEFB400-455 |         | 395 | 75 | 400-455    |            |           | 8.6  |
| LEFB450-505 |         | 445 | 80 | 450-505    |            |           | 10.8 |



| 訂貨型號            | ECK No. | L   | H  | W | K | ød | ØD  | 重量Kg<br>Weight |
|-----------------|---------|-----|----|---|---|----|-----|----------------|
| BT50-ECK7A -100 | 7       | 100 | 12 | 8 | 8 | 40 | 128 | 7.3            |
| -150            |         | 150 |    |   |   |    |     | 8.9            |
| -200            |         | 200 |    |   |   |    |     | 10.4           |
| -250            |         | 250 |    |   |   |    |     | 11.9           |
| -300            |         | 300 |    |   |   |    |     | 13.4           |
| SK50-ECK7A -100 |         | 100 |    |   |   |    |     | 7.2            |
| -150            |         | 150 |    |   |   |    |     | 8.6            |
| -200            | 200     | 10  |    |   |   |    |     |                |
| NT50-ECK7A -100 | 100     | 7.2 |    |   |   |    |     |                |
| -150            | 150     | 8.6 |    |   |   |    |     |                |
| -200            | 200     | 10  |    |   |   |    |     |                |

## 大範圍粗鏜刀頭(鋁合金)



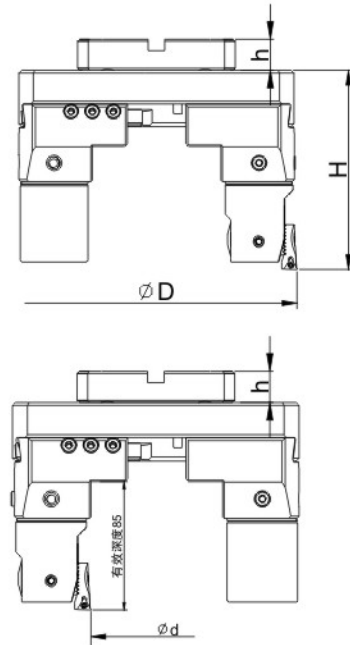
| 訂貨型號       | 加工直徑<br>ØD | H   | 刀柄規格<br> | 加強板  |      |    | 鋁合金橫板  |     |      |
|------------|------------|-----|---|--|------|----|---|-----|------|
|            |            |     |   | 型號   | 重量Kg | h  | 型號  | L   | 重量Kg |
| LRB150-200 | 150-200    | 95  | ECK7A   | --   | --   | -- | LB150-200   | 145 | 0.8  |
| LRB200-270 | 200-270    | 95  |   |  |      |    | LB200-270   | 195 | 1.1  |
| LRB270-340 | 270-340    | 95  |   |  |      |    | LB270-340   | 265 | 1.5  |
| LRB340-410 | 340-410    | 100 |   |  |      |    | LB340-410   | 335 | 2.2  |
| LRB410-480 | 410-480    | 100 |   |  |      |    | LB410-480   | 405 | 2.7  |
| LRB480-550 | 480-550    | 100 |   | FL220  | 3.0  | 30 | LB480-550   | 475 | 3.2  |
| LRB550-620 | 550-620    | 100 |   |  |      |    | LB550-620   | 545 | 3.7  |
| LRB620-690 | 620-690    | 105 |   |  |      |    | LB620-690   | 615 | 5.2  |
| LRB690-760 | 690-760    | 105 |   |  |      |    | LB690-760   | 685 | 5.8  |
| LRB760-830 | 760-830    | 105 |   |  |      |    | LB760-830   | 755 | 6.5  |
|            |            |     |   | FL350  | 5.0  | 30 |   |     |      |

| 訂貨型號       | 固定座  |      | 刀片座  |      | 刀片型號       | 刀片螺絲  |
|------------|---|------|--|------|------------|-------|
|            | 型號  | 重量Kg | 型號   | 重量Kg |            |       |
| LRB150-200 | CB150   | 1.6  | LRB150   | 0.75 | CCMT120408 | CSTB5 |
| LRB200-270 | CB200   | 2.2  |  |      |            |       |
| LRB270-340 |   |      |  |      |            |       |
| LRB340-410 |   |      |  |      |            |       |
| LRB410-480 |   |      |  |      |            |       |
| LRB480-550 |   |      |  |      |            |       |
| LRB550-620 |   |      |  |      |            |       |
| LRB620-690 |   |      |  |      |            |       |
| LRB690-760 |   |      |  |      |            |       |
| LRB760-830 |   |      |  |      |            |       |

※ 爲了保證鏜刀的最佳剛性，在直徑480以下另配有鋼制橫板供選購。

| 訂貨型號      | L   | 重量Kg |
|-----------|-----|------|
| SB150-200 | 145 | 2.1  |
| SB200-270 | 195 | 3.0  |
| SB270-340 | 265 | 4.3  |
| SB340-410 | 335 | 6.5  |
| SB410-480 | 405 | 8.0  |

大範圍精鏢刀頭(鋁合金)

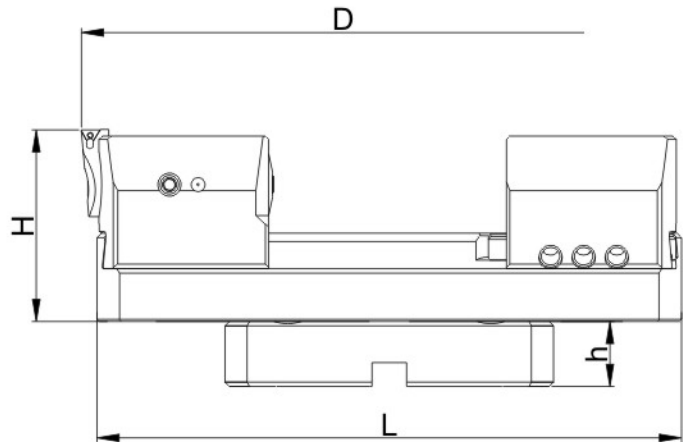
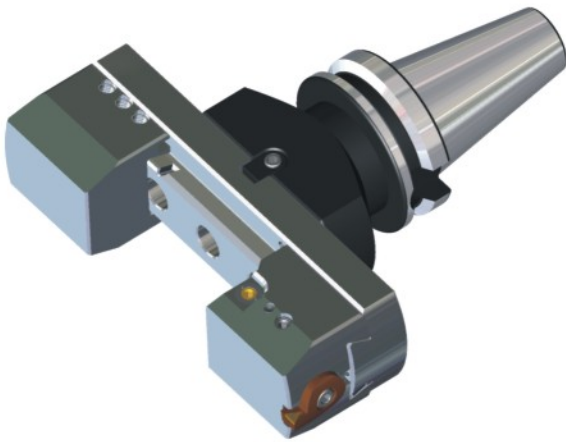


| 訂貨型號        | 加工直徑<br>ØD | 加工直徑<br>Ød | H   | 刀柄規格<br> | 加強板   |      |    | 鋁合金橫板     |     |      |
|-------------|------------|------------|-----|----------|-------|------|----|-----------|-----|------|
|             |            |            |     |          | 型號    | 重量Kg | h  | 型號        | L   | 重量Kg |
| LFBS150-200 | 150-200    | 10-80      | 140 | ECK7A    | --    | --   | -- | LB150-200 | 145 | 0.8  |
| LFBS200-270 | 200-270    | 40-135     | 140 |          |       |      |    | LB200-270 | 195 | 1.1  |
| LFBS270-340 | 270-340    | 110-205    | 140 |          |       |      |    | LB270-340 | 265 | 1.5  |
| LFBS340-410 | 340-410    | 180-275    | 145 |          |       |      |    | LB340-410 | 335 | 2.2  |
| LFBS410-480 | 410-480    | 250-345    | 145 |          |       |      |    | LB410-480 | 405 | 2.7  |
| LFBS480-550 | 480-550    | 320-415    | 145 |          |       |      |    | LB480-550 | 475 | 3.2  |
| LFBS550-620 | 550-620    | 390-485    | 145 |          | FL220 | 3.0  | 30 | LB550-620 | 545 | 3.7  |
| LFBS620-690 | 620-690    | 460-555    | 150 |          | FL350 | 5.0  | 30 | LB620-690 | 615 | 5.2  |
| LFBS690-760 | 690-760    | 530-625    | 150 |          |       |      |    | LB690-760 | 685 | 5.8  |
| LFBS760-830 | 760-830    | 600-695    | 150 |          |       |      |    | LB760-830 | 755 | 6.5  |

| 訂貨型號        | 固定座   |      | 精鏢頭型號<br>        | 配重塊<br>            | 刀片型號               | 刀片螺絲     |
|-------------|-------|------|------------------|--------------------|--------------------|----------|
|             | 型號    | 重量Kg |                  |                    |                    |          |
| LFBS150-200 | TB150 | 0.9  | FBN54-76<br>ECK4 | BA-ECK4<br>(0.8kg) | TP0902<br>(TC1102) | CSTB-2.5 |
| LFBS200-270 | TB200 | 1.2  |                  |                    |                    |          |
| LFBS270-340 |       |      |                  |                    |                    |          |
| LFBS340-410 |       |      |                  |                    |                    |          |
| LFBS410-480 |       |      |                  |                    |                    |          |
| LFBS480-550 |       |      |                  |                    |                    |          |
| LFBS550-620 |       |      |                  |                    |                    |          |
| LFBS620-690 |       |      |                  |                    |                    |          |
| LFBS690-760 |       |      |                  |                    |                    |          |
| LFBS760-830 |       |      |                  |                    |                    |          |



大範圍精鏜刀頭(鋁合金)

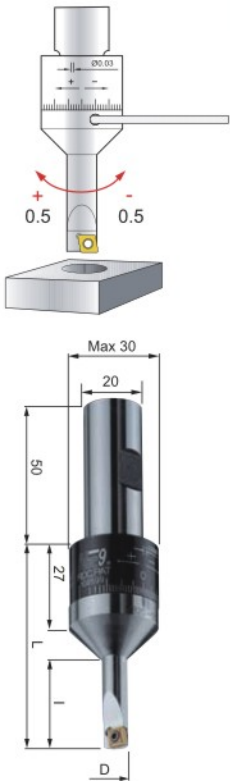


| 訂貨型號       | 加工直徑<br>ØD | H   | 刀柄規格<br> | 加強板<br> |      |    | 鋁合金橫板<br> |     |      |
|------------|------------|-----|----------|---------|------|----|-----------|-----|------|
|            |            |     |          | 型號      | 重量Kg | h  | 型號        | L   | 重量Kg |
| LFB150-200 | 150-200    | 95  | ECK7A    | --      | --   | -- | LB150-200 | 145 | 0.8  |
| LFB200-270 | 200-270    | 95  |          |         |      |    | LB200-270 | 195 | 1.1  |
| LFB270-340 | 270-340    | 95  |          |         |      |    | LB270-340 | 265 | 1.5  |
| LFB340-410 | 340-410    | 100 |          |         |      |    | LB340-410 | 335 | 2.2  |
| LFB410-480 | 410-480    | 100 |          |         |      |    | LB410-480 | 405 | 2.7  |
| LFB480-550 | 480-550    | 100 |          | FL220   | 3.0  | 30 | LB480-550 | 475 | 3.2  |
| LFB550-620 | 550-620    | 100 |          | FL350   | 5.0  | 30 | LB550-620 | 545 | 3.7  |
| LFB620-690 | 620-690    | 105 |          |         |      |    | LB620-690 | 615 | 5.2  |
| LFB690-760 | 690-760    | 105 |          |         |      |    | LB690-760 | 685 | 5.8  |
| LFB760-830 | 760-830    | 105 |          |         |      |    | LB760-830 | 755 | 6.5  |

| 訂貨型號       | 精鏜頭<br> |      | 配重塊<br> |      | 刀片型號               | 刀片螺絲    |
|------------|---------|------|---------|------|--------------------|---------|
|            | 型號      | 重量Kg | 型號      | 重量Kg |                    |         |
| LFB150-200 | EMW150  | 1.8  | BMW150  | 1.3  | TP0902<br>(TC1102) | CSTB2.5 |
| LFB200-270 |         |      |         |      |                    |         |
| LFB270-340 |         |      |         |      |                    |         |
| LFB340-410 |         |      |         |      |                    |         |
| LFB410-480 |         |      |         |      |                    |         |
| LFB480-550 |         |      |         |      |                    |         |
| LFB550-620 |         |      |         |      |                    |         |
| LFB620-690 |         |      |         |      |                    |         |
| LFB690-760 |         |      |         |      |                    |         |
| LFB760-830 |         |      |         |      |                    |         |

99101

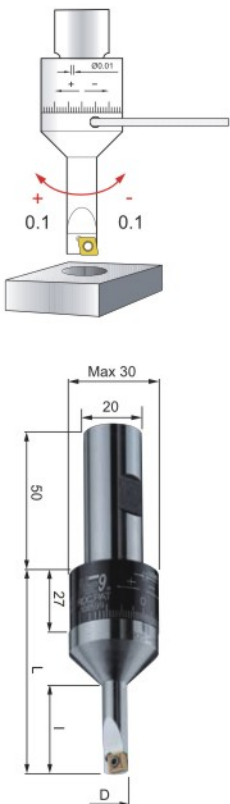
\* H type with internal coolant can be ordered on request from Dia. 7mm.  
Ordering example: 00-99101-07H.



| Ordering Code | Part No.     |   | ØD        | I  | L  | Insert   | Key / Screw       |          |                   |
|---------------|--------------|---|-----------|----|----|----------|-------------------|----------|-------------------|
| 00-99101-07   | SB20-0721-03 | Adjustment range:±0.5mm<br>Each Division 0.03mm | 6.5-7.5   | 21 | 60 | CC040102 | NK-T6<br>NS-20045 |          |                   |
| 00-99101-08   | SB20-0824-03 |   | 7.5-8.5   | 24 | 63 |          |                   |          |                   |
| 00-99101-09   | SB20-0927-03 |   | 8.5-9.5   | 27 | 65 | CC060204 | NK-T7<br>NS-25045 |          |                   |
| 00-99101-10   | SB20-1030-03 |   | 9.5-10.5  | 30 | 68 |          |                   |          |                   |
| 00-99101-11   | SB20-1133-03 |   | 10.5-11.5 | 33 | 70 |          |                   |          |                   |
| 00-99101-12   | SB20-1236-03 |   | 11.5-12.5 | 36 | 73 |          |                   |          |                   |
| 00-99101-13   | SB20-1339-03 |   | 12.5-13.5 | 39 | 75 |          |                   |          |                   |
| 00-99101-14   | SB20-1442-03 |   | 13.5-14.5 | 42 | 78 |          |                   |          |                   |
| 00-99101-15   | SB20-1545-03 |   | 14.5-15.5 | 45 | 80 |          |                   |          |                   |
| 00-99101-16   | SB20-1648-03 |   | 15.5-16.5 | 48 | 83 |          |                   |          |                   |
| 00-99101-17   | SB20-1751-03 |   | 16.5-17.5 | 51 | 85 |          |                   | CC060204 | NK-T7<br>NS-25060 |
| 00-99101-18   | SB20-1850-03 |   | 17.5-18.5 | 50 | 82 |          |                   |          |                   |
| 00-99101-19   | SB20-1950-03 |   | 18.5-19.5 | 50 | 82 |          |                   |          |                   |
| 00-99101-20   | SB20-2050-03 |   | 19.5-20.5 | 50 | 82 |          |                   |          |                   |
| 00-99101-21   | SB20-2150-03 |   | 20.5-21.5 | 50 | 82 |          |                   |          |                   |
| 00-99101-22   | SB20-2250-03 |   | 21.5-22.5 | 50 | 82 |          |                   |          |                   |
| 00-99101-23   | SB20-2350-03 |   | 22.5-23.5 | 50 | 82 |          |                   |          |                   |
| 00-99101-24   | SB20-2450-03 |   | 23.5-24.5 | 50 | 82 |          |                   |          |                   |
| 00-99101-25   | SB20-2550-03 |   | 24.5-25.5 | 50 | 82 |          |                   |          |                   |

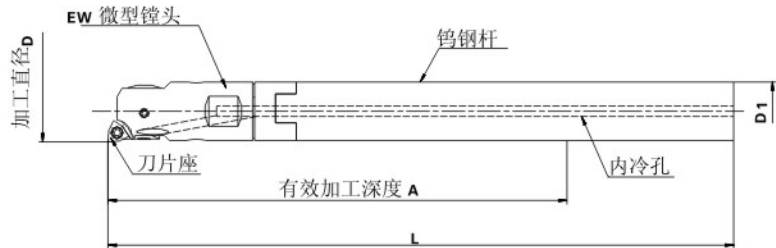
99121

\* H type with internal coolant can be ordered on request from Dia. 7mm.  
Ordering example: 00-99121-07H.



| Ordering Code | Part No.     |   | ØD        | I  | L  | Insert   | Key / Screw       |          |                   |
|---------------|--------------|---|-----------|----|----|----------|-------------------|----------|-------------------|
| 00-99121-05   | SB20-0515-01 | Adjustment range:±0.1mm<br>Each Division 0.01mm | 4.9-5.1   | 15 | 54 | CC030102 | NK-T6<br>NS-16030 |          |                   |
| 00-99121-06   | SB20-0618-01 |   | 5.9-6.1   | 18 | 57 |          |                   |          |                   |
| 00-99121-07   | SB20-0721-01 |   | 6.9-7.1   | 21 | 60 | CC040102 | NK-T6<br>NS-20045 |          |                   |
| 00-99121-08   | SB20-0824-01 |   | 7.9-8.1   | 24 | 63 |          |                   |          |                   |
| 00-99121-09   | SB20-0927-01 |   | 8.9-9.1   | 27 | 65 | CC060204 | NK-T7<br>NS-25045 |          |                   |
| 00-99121-10   | SB20-1030-01 |   | 9.9-10.1  | 30 | 68 |          |                   |          |                   |
| 00-99121-11   | SB20-1133-01 |   | 10.9-11.1 | 33 | 70 |          |                   |          |                   |
| 00-99121-12   | SB20-1236-01 |   | 11.9-12.1 | 36 | 73 |          |                   |          |                   |
| 00-99121-13   | SB20-1339-01 |   | 12.9-13.1 | 39 | 75 |          |                   |          |                   |
| 00-99121-14   | SB20-1442-01 |   | 13.9-14.1 | 42 | 78 |          |                   |          |                   |
| 00-99121-15   | SB20-1545-01 |   | 14.9-15.1 | 45 | 80 |          |                   |          |                   |
| 00-99121-16   | SB20-1648-01 |   | 15.9-16.1 | 48 | 83 |          |                   |          |                   |
| 00-99121-17   | SB20-1751-01 |   | 16.9-17.1 | 51 | 85 |          |                   | CC060204 | NK-T7<br>NS-25060 |
| 00-99121-18   | SB20-1850-01 |   | 17.9-18.1 | 50 | 82 |          |                   |          |                   |
| 00-99121-19   | SB20-1950-01 |   | 18.9-19.1 | 50 | 82 |          |                   |          |                   |
| 00-99121-20   | SB20-2050-01 |   | 19.9-20.1 | 50 | 82 |          |                   |          |                   |
| 00-99121-21   | SB20-2150-01 |   | 20.9-21.1 | 50 | 82 |          |                   |          |                   |
| 00-99121-22   | SB20-2250-01 |   | 21.9-22.1 | 50 | 82 |          |                   |          |                   |
| 00-99121-23   | SB20-2350-01 |   | 22.9-23.1 | 50 | 82 |          |                   |          |                   |
| 00-99121-24   | SB20-2450-01 |   | 23.9-24.1 | 50 | 82 |          |                   |          |                   |
| 00-99121-25   | SB20-2550-01 |   | 24.9-25.1 | 50 | 82 |          |                   |          |                   |

鎢鋼杆EW微型精鏢頭

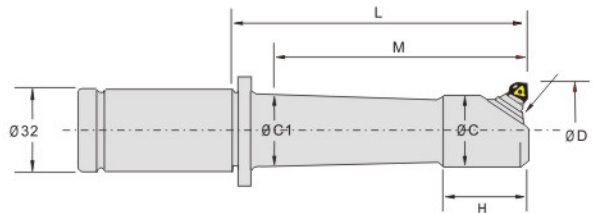


| 訂貨型號          | 加工直徑<br>ØD | L   | A   | ØD1          | 刀片座  | 刀片型號       | 刀片螺絲   | 扳手 | 刀杆型號         |
|---------------|------------|-----|-----|--------------|------|------------|--------|----|--------------|
| SC14-EW15-155 | 15-18      | 195 | 155 | 14           | EI15 | WC..020102 | CSTB-2 | T6 | SC14-M6-160  |
| SC16-EW18-100 | 18-22      | 140 | 100 | 16           |      |            |        |    | SC16-M10-105 |
| SC16-EW18-135 |            | 175 | 135 | SC16-M10-140 |      |            |        |    |              |
| SC16-EW18-175 |            | 215 | 175 | SC16-M10-180 |      |            |        |    |              |

★ 鎢鋼杆與精鏢頭是分體結構，需要單獨訂購。

★ 不附帶刀片，請另外採購。

C/BYB直柄微調鏢孔器



| 訂貨型號              | D - L | 搪孔能力      | M   | H  | C  | C <sub>1</sub> | 適用刀片       | 螺絲                    | 扳手 |
|-------------------|-------|-----------|-----|----|----|----------------|------------|-----------------------|----|
| C32 - BYB19 - 95  |       | 19 - 22.5 | 80  | 35 | 18 | 18             | TBGT06102L | M2 - 5.0 - 2.7 - 60   | T6 |
| C32 - BYB22 - 95  |       | 22 - 29.5 | 80  | 35 | 20 | 21             | TBGT06102L | M2 - 5.0 - 2.7 - 60   | T6 |
| C32 - BYB29 - 95  |       | 29 - 41   | 85  | 45 | 25 | 27             | TBGT06102L | M2 - 5.0 - 2.7 - 60   | T6 |
| C32 - BYB29 - 150 |       | 29 - 41   | 140 | 45 | 25 | 27             | TBGT06102L | M2 - 5.0 - 2.7 - 60   | T6 |
| C32 - BYB38 - 110 |       | 38 - 50   | 102 | 50 | 35 | 37             | TPGH11304L | M2.5 - 7.5 - 4.3 - 90 | T8 |
| C32 - BYB48 - 150 |       | 48 - 65   | 145 | 50 | 41 | 37             | TPGH11304L | M2.5 - 7.5 - 4.3 - 90 | T8 |



超硬整體碳化鎢制鏢刀杆(φ 20-75)



Fig 1

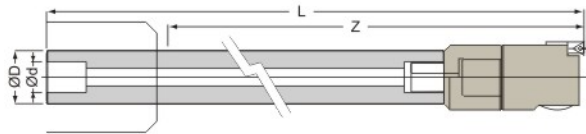


Fig 2

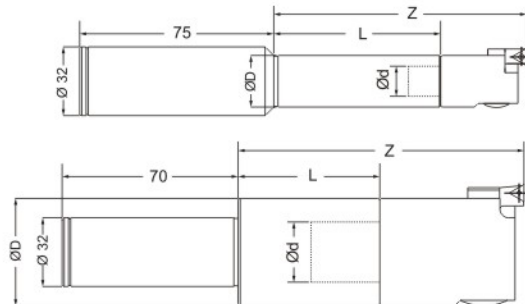


| 訂貨型號             | 樣式 Fig | 內孔徑 Ød | 外徑 ØD | 全長 L | 有效長 Z | 接合鏢刀頭 | 搪孔範圍 Ø | 重量 (kg) |     |
|------------------|--------|--------|-------|------|-------|-------|--------|---------|-----|
| SC19-LBK1-150L   | 1      | 11     | 19    | 225  | 150   | CBH20 | 20-26  | 0.8     |     |
| SC19-LBK1-200L   |        |        |       | 275  | 200   |       |        | 1       |     |
| SC24-LBK2-180L   |        | 14     | 24    | 260  | 180   | CBH25 | 25-33  | 1.45    |     |
| SC24-LBK2-240L   |        |        |       | 320  | 240   |       |        | 1.8     |     |
| SC32-LBK3-240L   |        | 18     | 32    | 320  | 240   | CBH32 | 33-42  | 2.8     |     |
| SC32-LBK3-310L   | 390    |        |       | 310  | 3.5   |       |        |         |     |
| SC32-LBK3/4-280L | 2      | 18/22  | 32/39 | 365  | 280   | CBH40 | 40-55  | 3.1     |     |
| SC32-LBK3/4-350L |        |        |       | 435  | 350   |       |        | 3.8     |     |
| SC40-LBK4-310L   | 1      | 22     | 40    | 390  | 310   |       |        | 41-55   | 5   |
| SC40-LBK4-400L   |        |        |       | 480  | 400   |       |        |         | 6.5 |
| SC40-LBK4/5-360L | 2      | 22/28  | 40/50 | 445  | 360   | CBH52 | 52-75  | 5.6     |     |
| SC40-LBK4/5-450L |        |        |       | 535  | 450   |       |        | 7.1     |     |

★此規格不含鏢刀頭

★LBK3/4與LBK4/5為小變大異徑延長杆

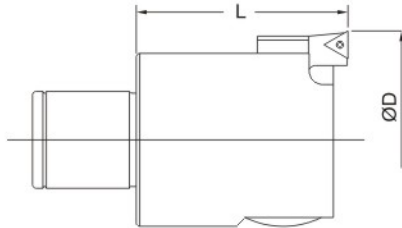
C32直柄鏢刀杆



| 訂貨型號          | 內孔徑 Ød | 外徑 ØD | 長度 L | 有效長 Z | 接合鏢刀頭                                      | 重量 (kg) |
|---------------|--------|-------|------|-------|--|---------|
| C32-LBK1-075L | 11     | 19    | 75   | 110   | CBH20                                      | 0.5     |
| C32-LBK2-070L | 14     | 24    | 70   | 110   | RBH25 ; RBH25LA                            | 0.55    |
| C32-LBK2-120L |        |       |      |       | CBH25                                      |         |
| C32-LBK3-070L | 18     | 31    | 70   | 110   | RBH32 ; RBH32LA                            | 0.65    |
| C32-LBK3-120L |        |       |      |       | CBH32                                      |         |
| C32-LBK4-060L | 22     | 39    | 60   | 110   | RBH40 ; RBH40LA                            | 0.8     |
| C32-LBK4-110L |        |       |      |       | CBH40 ; CBI 4                              |         |
| C32-LBK5-060L | 28     | 50    | 60   | 120   | RBH52 ; RBH52LA                            | 1       |
| C32-LBK5-120L |        |       |      |       | CBH52 ; CBI 5                              |         |
| C32-LBK6-060L | 36     | 64    | 60   | 130   | RBH68 ; RBH90                              | 1.55    |
| C32-LBK6-120L |        |       |      |       | RBH68LA ; RBH90LA<br>CBH68,100,150 ; CBI 6 |         |

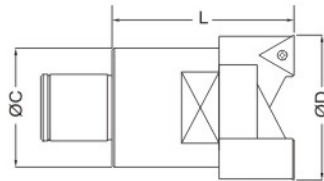
★此規格不含鏢刀頭

## CBH微調精鏢刀系列(φ 20-202)



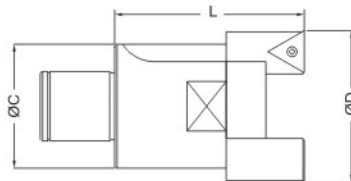
| 搪头型号  | 接合型号 | 搪孔范围ØD | 搪头长度 | 重量 kg | 刀片规格/螺丝/扳手                                 |
|-------|------|--------|------|-------|--|
| CBH20 | LBK1 | 20-26  | 35   | 0.1   | TB06/M2/T6<br>TP08/M2.2/T7<br>TC09/M2.2/T7 |
| CBH25 | LBK2 | 25-33  | 40   | 0.2   |  |
| CBH32 | LBK3 | 32-42  |      | 0.3   |  |
| CBH40 | LBK4 | 40-55  | 50   | 0.5   |  |
| CBH52 | LBK5 | 52-75  | 60   | 1     |  |

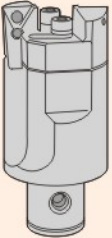
## RBH可調式雙刃粗鏢刀系列(φ 25-204)



| 接头型号  | 接合型号       | 搪孔范围D      | L      | ØC | 刀片规格 | 重量 kg      |      |
|---|------------|------------|--------|----|------|------------|------|
|  | RBH25-33-C | LBK2       | 25~ 33 | 45 | 24   | CCMT060204 | 0.15 |
|   | RBH32-42-C |            | 32~ 42 | 55 | 31   | CCMT060204 | 0.3  |
|   | RBH32-42-T | TCMT110204 |        |    |      |            |      |
|   | RBH40-55-C | LBK4       | 40~ 55 | 65 | 39   | CCMT09T304 | 0.5  |
|   | RBH40-55-T |            |        |    |      | TCMT16T304 |      |
|   | RBH40-55-S |            |        |    |      | SCMT09T304 |      |
|   | RBH52-70-C | LBK5       | 52~ 70 | 75 | 50   | CCMT09T304 | 1    |
|   | RBH52-70-T |            |        |    |      | TCMT16T304 |      |
|   | RBH52-70-S |            |        |    |      | SCMT09T304 |      |

## 新型RBH-LA可調式雙刃粗鏢刀系列(φ 25-204)



| 搪头型号  | 接合型号         | 搪孔范围D mm   | L mm  | ØC mm | 刀片规格 | 重量 kg      |            |
|---|--------------|------------|-------|-------|------|------------|------------|
|  | RBH25-35LA-C | LBK2       | 25~35 | 50    | 24   | CCMT060204 | 0.15       |
|   | RBH32-45LA-C |            | 32~45 | 60    | 31   | CCMT060204 |            |
|   | RBH32-45LA-T | TCMT110204 |       |       |      | 0.3        |            |
|   | RBH40-55LA-C | LBK4       | 40~55 | 74    | 39   |            | CCMT09T304 |
|   | RBH40-55LA-T |            |       |       |      | TCMT16T304 |            |
|   | RBH40-55LA-S |            |       |       |      | SCMT09T304 |            |
|   | RBH52-75LA-C | LBK5       | 52~75 | 80    | 50   | CCMT09T304 | 1          |
|   | RBH52-75LA-T |            |       |       |      | TCMT16T304 |            |
|   | RBH52-75LA-S |            |       |       |      | SCMT09T304 |            |

## RW粗镗头

利用平衡双刃进行强力重切削。

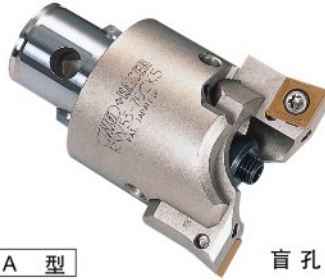
加工范围  $\phi 25 \sim \phi 150$

中心内冷

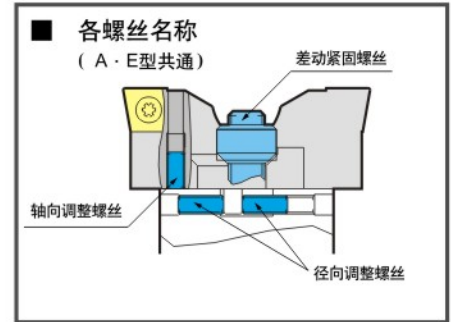
- 具有轴向调整机构，可以把两刀片座调整到完全平衡，大幅度提高加工条件。
- 大切削量的加工时，可以利用段差切削法减少工时。
- 备有丰富的刀片系列，对应各种工件的加工。



通孔用 **A 型**

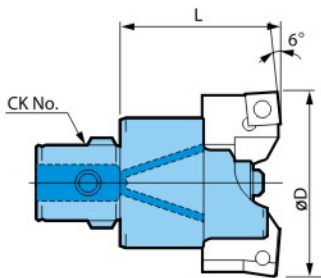


盲孔用 **E 型**



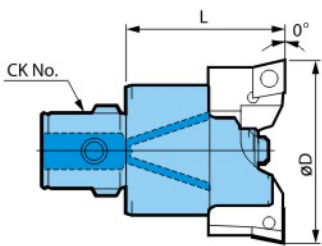
● 镗头型号说明

**RW** **25-33** **CK2**  
 CK No. 加工范围  
 RW粗镗头



### 通孔用A型

| 加工直径 $\phi D$ | 镗头型号                | CK No. | 适用刀片座     | L    | 差动紧固螺丝 | 质量 (kg) |
|---------------|---------------------|--------|-----------|------|--------|---------|
| 25 ~ 33       | <b>RW 25- 33CK2</b> | 2      | RW2533A   | 35.5 | DS25   | 0.1     |
| 32 ~ 42       | <b>RW 32- 42CK3</b> | 3      | RW3242A   | 40   | DS32   | 0.2     |
| 41 ~ 54       | <b>RW 41- 54CK4</b> | 4      | RW4154A   | 47   | DS41   | 0.4     |
| 53 ~ 70       | <b>RW 53- 70CK5</b> | 5      | RW5370A   | 57   | DS53   | 0.8     |
| 68 ~ 88       | <b>RW 68-100CK6</b> | 6      | RW6888A   | 71   | DS68   | 1.6     |
| 86 ~ 106      |                     |        | RW86106A  |      |        | 1.6     |
| 100 ~ 125     |                     |        | RW100125A |      |        | 2.3     |
| 125 ~ 150     | <b>RW100-150CK6</b> |        | RW125150A |      |        | 2.3     |



### 盲孔用E型

| 加工直径 $\phi D$ | 镗头型号                | CK No. | 适用刀片座      | L    | 差动紧固螺丝 | 质量 (kg) |
|---------------|---------------------|--------|------------|------|--------|---------|
| 25 ~ 33       | <b>RW 25- 33CK2</b> | 2      | RW2533E    | 35.5 | DS25   | 0.1     |
| 30 ~ 37       |                     |        | RW3037E    |      |        |         |
| 32 ~ 42       | <b>RW 32- 42CK3</b> | 3      | RW3242E    | 40   | DS32   | 0.2     |
| 40 ~ 48       |                     |        | RW4048E    |      |        |         |
| 41 ~ 54       | <b>RW 41- 54CK4</b> | 4      | RW4154E    | 47   | DS41   | 0.4     |
| 51 ~ 62       |                     |        | RW5162E    |      |        |         |
| 53 ~ 70       | <b>RW 53- 70CK5</b> | 5      | RW5370E    | 57   | DS53   | 0.8     |
| 66 ~ 81       |                     |        | RW6681E    |      |        |         |
| 68 ~ 88       | <b>RW 68-100CK6</b> | 6      | RW6888E    | 71   | DS68   | 1.6     |
| 86 ~ 106      |                     |        | RW6888EL   |      |        |         |
|               |                     |        | RW86106E   |      |        |         |
|               |                     |        | RW86106EL  |      |        |         |
| 100 ~ 125     | <b>RW100-150CK6</b> |        | RW100125E  | 71   | DS68   | 2.3     |
| 125 ~ 150     |                     |        | RW100125EL |      |        |         |
|               |                     |        |            |      |        |         |
|               |                     |        | RW125150EL |      |        |         |

1. 附带一个差动紧固螺丝、L型扳手一把。
2. 不附带刀片座及刀片。
3. 所有RW镗头都带内冷孔。

**⚠ 请注意**  
 组装时请确认轴向调整螺丝不得超出刀片座的高度。



## RW刀片座

· 刀片座使用模具钢制作，刚性强。

● 刀片座型号说明



通孔用A型



盲孔用E型

### 通孔用A型

| 刀片座型号     | 形状图          | 适用镗头型号       | 适用刀片 | 刀片紧固螺丝组合 |
|-----------|--------------|--------------|------|----------|
| RW2533A   |              | RW 25- 33CK2 | SC07 | S3S      |
| RW3242A   |              | RW 32- 42CK3 | SC09 | S4S      |
| RW4154A   |              | RW 41- 54CK4 |      |          |
| RW5370A   |              | RW 68-100CK6 | SC12 | S5S      |
| RW6888A   |              |              |      |          |
| RW86106A  |              |              |      |          |
| RW100125A |              |              |      |          |
| RW125150A | RW100-150CK6 |              |      |          |

### 盲孔用E型

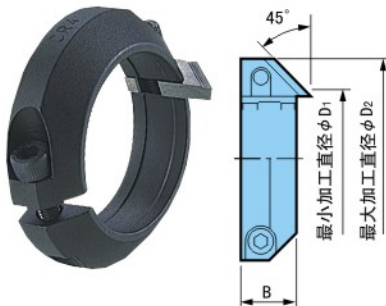
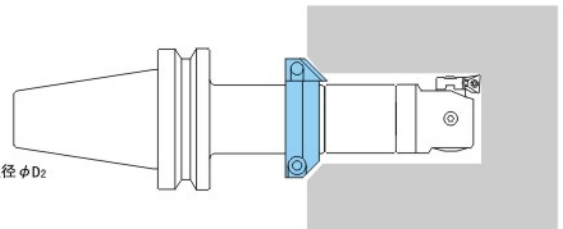
| 刀片座型号      | 形状图          | 适用镗头型号       | 适用刀片 | 刀片紧固螺丝组合 |
|------------|--------------|--------------|------|----------|
| RW2533E    |              | RW 25- 33CK2 | CC07 | S3S      |
| RW3037E    |              | RW 32- 42CK3 | CC09 | S4S      |
| RW3242E    |              |              |      |          |
| RW4048E    |              |              |      |          |
| RW4154E    |              | RW 41- 54CK4 | CC09 | S4S      |
| RW5162E    |              |              |      |          |
| RW5370E    |              | RW 53- 70CK5 | CC12 | S5S      |
| RW6681E    |              |              |      |          |
| RW6888E    |              |              |      |          |
| RW6888EL   |              |              |      |          |
| RW86106E   |              | RW 68-100CK6 | CC16 | S5S      |
| RW86106EL  |              |              |      |          |
| RW86106EL  |              |              |      |          |
| RW100125E  |              |              |      |          |
| RW100125EL |              |              |      |          |
| RW125150E  |              |              |      |          |
| RW125150EL | RW100-150CK6 | CC16         |      |          |

1. 不附带刀片，请另外订购。
2. 各型号中包含刀片座2只和固定刀片用扳手1把。
3. 刀片紧固螺丝组合（另购）中包含10颗紧固螺丝和扳手1把。
4. 除刀片座以外，表中的其它附件都不附带，请另外订购。

## CK倒角器

· 安装在CK刀柄上用于镗孔、倒角的复合加工。

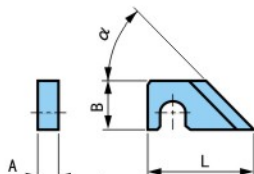
● 型号说明



| 订货型号    | CK No. | φ D1 | φ D2 | B  | 刀片               | 质量 (kg) |
|---------|--------|------|------|----|------------------|---------|
| CR1- 35 | 1      | 20   | 35   | 13 | CB1-45<br>CB1-30 | .06     |
| CR2- 42 | 2      | 25   | 42   | 15 |                  | 0.08    |
| CR3- 49 | 3      | 32   | 49   |    |                  | 0.10    |
| CR4- 57 | 4      | 41   | 57   |    |                  | 0.12    |
| CR5- 90 | 5      | 53   | 90   | 25 | CB2-45<br>CB2-30 | 0.55    |
| CR6-104 | 6      | 68   | 104  |    |                  | 0.67    |
| CR6-138 |        | 98   | 138  |    |                  | 1.80    |
| CR6-160 |        | 120  | 160  |    |                  | 2.50    |

1. CK倒角器中包含45°的刀片1片。
2. 刀片的材质是硬质合金M类。
3. 需备用刀片时请注明刀片的型号。

### ● 刀片



| 订货型号   | L    | A | B  | α   | 适合CK No. |
|--------|------|---|----|-----|----------|
| CB1-45 | 23.5 | 4 | 9  | 45° | CK1~4    |
| CB2-45 | 43   | 8 | 20 |     | CK5~6    |
| CB1-30 | 27.5 | 4 | 9  | 30° | CK1~4    |
| CB2-30 | 52   | 8 | 20 |     | CK5~6    |

1. 刀片的材质是硬质合金M类。

EWN精鏜頭

加工范围  $\phi 20 \sim \phi 203$

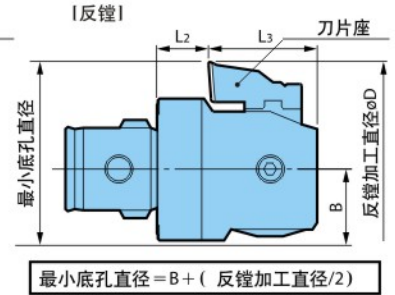
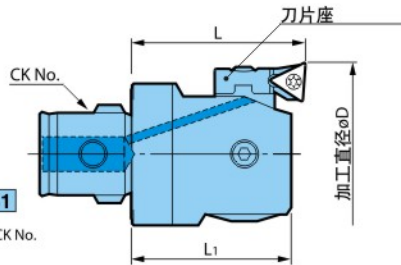
中心内冷  $V_{max} 1,200m/min$

有预平衡设计，可获得稳定的加工精度。

- 标准对应反镗工加工，使用范围广，增大附加价值。



● 型号说明  
**EWN 20-36 - CKB1**  
 EWN精镗头  
 加工范围  
 CK No.



| 订货型号           | CK No. | 刀片座    | 正 镗       |      |      | 反 镗       |      |      |      | 质量 (kg) | 适用刀片 |
|----------------|--------|--------|-----------|------|------|-----------|------|------|------|---------|------|
|                |        |        | 加工范围      | L    | L1   | 加工范围      | L2   | L3   | B    |         |      |
| EWN 20- 36CKB1 | 1      | ENH1-1 | 20 ~ 26   | 32.5 | 29.5 | —         | 10.5 | 19   | 10   | 0.07    | TP08 |
|                |        | ENH1-2 | 25 ~ 31   |      |      | 30 ~ 31   |      |      |      |         |      |
|                |        | ENH1-3 | 30 ~ 36   |      |      | 30 ~ 36   |      |      |      |         |      |
| EWN 25- 47CKB2 | 2      | ENH2-1 | 25 ~ 33   | 35.5 | 32.5 | —         | 11.5 | 21   | 12.5 | 0.12    |      |
|                |        | ENH2-2 | 32 ~ 40   |      |      | 36 ~ 40   |      |      |      |         |      |
|                |        | ENH2-3 | 39 ~ 47   |      |      | 39 ~ 47   |      |      |      |         |      |
| EWN 32- 60CKB3 | 3      | ENH3-1 | 32 ~ 42   | 40   | 35   | —         | 10   | 25   | 16   | 0.21    |      |
|                |        | ENH3-2 | 41 ~ 51   |      |      | 46 ~ 51   |      |      |      |         |      |
|                |        | ENH3-3 | 50 ~ 60   |      |      | 50 ~ 60   |      |      |      |         |      |
| EWN 41- 74CKB4 | 4      | ENH4-1 | 41 ~ 54   | 47   | 43   | —         | 14   | 29   | 20   | 0.40    |      |
|                |        | ENH4-2 | 50 ~ 63   |      |      | 53 ~ 63   |      |      |      |         |      |
|                |        | ENH4-3 | 61 ~ 74   |      |      | 61 ~ 74   |      |      |      |         |      |
| EWN 53- 95CKB5 | 5      | ENH5-1 | 53 ~ 70   | 57   | 53   | 62 ~ 70   | 19   | 34   | 25.5 | 1.10    |      |
|                |        | ENH5-2 | 65 ~ 82   |      |      | 65 ~ 82   |      |      |      |         |      |
|                |        | ENH5-3 | 78 ~ 95   |      |      | 78 ~ 95   |      |      |      |         |      |
| EWN 68-150CKB6 | 6      | ENH6-1 | 68 ~ 100  | 71   | 67.2 | 80 ~ 100  | 22   | 45.2 | 32.5 | 1.74    |      |
|                |        | ENH6-2 | 94 ~ 126  |      |      | 94 ~ 126  |      |      |      |         |      |
|                |        | ENH6-3 | 118 ~ 150 |      |      | 118 ~ 150 |      |      |      |         |      |
| EWN100-203CKB6 | 6      | ENH6-1 | 100 ~ 153 | 71   | 67.2 | 112 ~ 153 | 22   | 45.2 | 45.5 | 2.46    |      |
|                |        | ENH6-2 | 126 ~ 179 |      |      | 126 ~ 179 |      |      |      |         |      |
|                |        | ENH6-3 | 150 ~ 203 |      |      | 150 ~ 203 |      |      |      |         |      |
| EWN100-203CKB7 | 7      | ENH6-1 | 100 ~ 153 | 87   | 83.2 | 112 ~ 153 | 38   | 45.2 | 45.5 | 2.96    |      |
|                |        | ENH6-2 | 126 ~ 179 |      |      | 126 ~ 179 |      |      |      |         |      |
|                |        | ENH6-3 | 150 ~ 203 |      |      | 150 ~ 203 |      |      |      |         |      |

1. 加工范围是指TP08刀片的刀尖半径RO.2、TC11刀片的刀尖半径RO.4时的值。
2. 附带ENH○-1刀片座。ENH○-2、ENH○-3刀片座需要另购。
3. 反镗加工时，主轴应反转。
4. 不附带刀片。

**注意**  
 EWN镗头自身允许最高切削速度为1200m/min，但实际加工时还与基础柄的长度、机器及工件的刚性等周边条件有关。请在容许范围内选择最合适的加工条件。

● 刀片座 PAT.P (另售)



| 型号     | 形状图 | 对应镗头         | 型号     | 形状图  | 对应镗头         | 型号      | 形状图  | 对应镗头         |
|--------|-----|--------------|--------|--|--------------|---------|--|--------------|
| ENH1-1 |     | EWN20-36CKB1 | ENH4-1 |  | EWN41-74CKB4 | ENH4-1E |  | EWN41-74CKB4 |
| ENH1-2 |     |              | ENH4-2 |  |              | ENH4-2E |  |              |
| ENH1-3 |     |              | ENH4-3 |  |              | ENH4-3E |  |              |
| ENH2-1 |     | EWN25-47CKB2 | ENH5-1 | EWN53-95CKB5   | ENH5-1E      |         | EWN53-95CKB5   |              |
| ENH2-2 |     |              | ENH5-2 |  | ENH5-2E      |         |  |              |
| ENH2-3 |     |              | ENH5-3 |  | ENH5-3E      |         |  |              |
| ENH3-1 |     | EWN32-60CKB3 | ENH6-1 | EWN 68-150CKB6<br>EWN100-203CKB6<br>EWN100-203CKB7<br>EWN150 | ENH6-1E      |         | EWN 68-150CKB6<br>EWN100-203CKB6<br>EWN100-203CKB7<br>EWN150 |              |
| ENH3-2 |     |              | ENH6-2 |  | ENH6-2E      |         |  |              |
| ENH3-3 |     |              | ENH6-3 |  | ENH6-3E      |         |  |              |

1. 不附带刀片，请另外订购。



EWN小徑精鏢頭

根据加工内容, 有3种系列可供选择

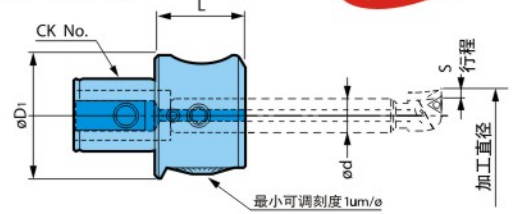
- 附带超精密、高信赖性的微调机构, 小径加工以镗代铰。
- 备有各种硬质合金刀杆, 解决深孔加工的难题。



● 型号说明  
**EWN**   **2-22**   **CK4**  
 ● CK No.  
 ● 加工范围  
 ● EWN精鏢頭

加工范围  $\phi 1 \sim \phi 50$

中心内冷



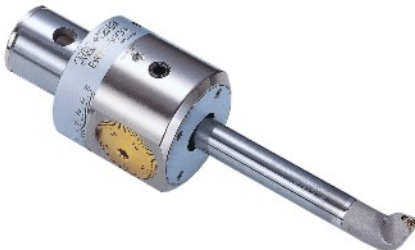
| 加工范围<br>$\phi D$ | 訂貨型號              | CK No. | $\phi d$ | $\phi D_1$ | L    | S       | 质量<br>(kg) |
|------------------|-------------------|--------|----------|------------|------|---------|------------|
| 1 ~ 22           | <b>EWN2-22CK4</b> | 4      | 10       | 39         | 28.5 | 0 ~ 2.0 | 0.25       |
| 1 ~ 32           | <b>EWN2-32CK5</b> | 5      | 12       | 50         | 36   | 0 ~ 3.5 | 0.50       |
| 1 ~ 50           | <b>EWN2-50CK6</b> | 6      | 16       | 63.5       | 45   | 0 ~ 4.5 | 1.05       |

1. EWN鏢頭不附帶鏢杆。
2. 上述鏢頭標準對應中心內冷。
3. 不附帶刀片, 請另外訂購。

EWB小徑精鏢頭

最小刻度  $5 \mu m / \phi$  的精密调整机构

- 通过转动平衡环使鏢頭内部的平衡块移动, 从而使鏢頭整体保持动平衡。

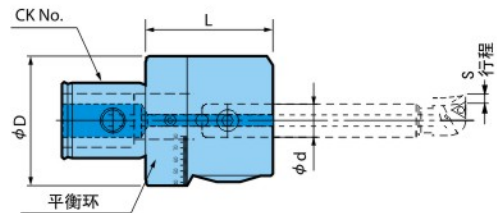


● 型号说明  
**EWB2-50**   **CK5**  
 ● CK No.  
 ● 精鏢頭

加工范围  $\phi 1 \sim \phi 50$

中心内冷

MAX.16000min<sup>-1</sup>  
(EWB2-32)



| 加工范围   | 訂貨型號              | CK No. | $\phi d$ | $\phi D$ | L  | S   | 质量(kg) |
|--------|-------------------|--------|----------|----------|----|-----|--------|
| 1 ~ 32 | <b>EWB2-32CK5</b> | 5      | 12       | 50       | 49 | 3.5 | 0.65   |
| 1 ~ 50 | <b>EWB2-50CK6</b> | 6      | 16       | 63.5     | 62 | 4.5 | 1.32   |

1. 不附帶鏢杆。請另外訂購。
- ※平衡環的設定值記載在使用說明書內。  
 錯誤設定會使不平衡量增大。所以請在使用前仔細閱讀使用說明書。



注意

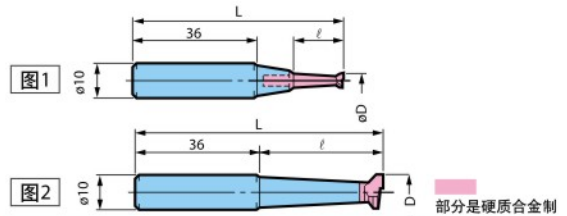
EWB小徑精鏢頭容許的最大轉速, 根據刀柄的長度, 機器的剛性等條件會有所不同。請根據具體加工情況選擇最佳切削參數。為了加工中有比較好的動平衡性, 請盡量在1mm以內行程使用。此鏢頭使用的鏢杆僅限於 (BIG)+MANSION 鏢杆系列中產品。

極小徑用整體式鏢杆

加工范围  $\phi 1 \sim \phi 9$

- 锋利的刀尖最适合于极小径的镗孔加工。

硬质合金



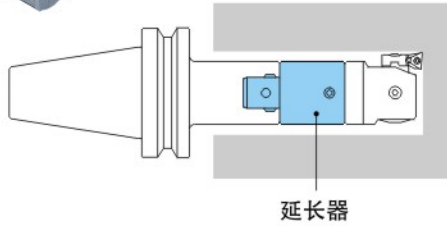
| 訂貨型號         | 圖 | $\phi D$ | $l$ | L  |
|--------------|---|----------|-----|----|
| <b>RBE 1</b> | 1 | 1        | 5   | 61 |
| <b>1.5</b>   |   | 1.5      | 7.5 | 63 |
| <b>2</b>     |   | 2        | 9   | 61 |
| <b>3</b>     |   | 3        | 14  |    |
| <b>5</b>     |   | 5        | 22  | 62 |
| <b>7</b>     | 2 | 7        | 28  | 64 |
| <b>9</b>     |   | 9        | 37  | 73 |

1. 不帶中心內冷孔
2. 刀刃為TiN塗層



延長器

• 连接在基础柄和镗头之间，延长加工深度。



延長器

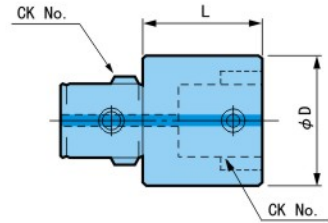
中心内冷

• 型号说明

CK11 - 20

延长的长度 L

• CK1与CK1的连接



| 訂貨型號     | CK No. | φ D | L   | 质量 (kg) |
|----------|--------|-----|-----|---------|
| CK11- 20 | 1      | 19  | 20  | 0.05    |
| - 30     |        |     | 30  | 0.07    |
| CK22- 30 | 2      | 24  | 30  | 0.10    |
| - 45     |        |     | 45  | 0.15    |
| CK33- 30 | 3      | 31  | 30  | 0.17    |
| - 45     |        |     | 45  | 0.25    |
| CK44- 45 | 4      | 39  | 45  | 0.40    |
| - 60     |        |     | 60  | 0.53    |
| CK55- 60 | 5      | 50  | 60  | 0.87    |
| - 90     |        |     | 90  | 1.29    |
| CK66- 60 | 6      | 64  | 60  | 1.38    |
| -100     |        |     | 100 | 2.31    |
| CK77-105 | 7      | 90  | 105 | 5.26    |

1. 有内冷孔，可进行中心内冷。
2. 请注意，使用延长器后长径比 (L/D) 增大，有可能影响加工条件。

減徑器

• 减小基础柄的外径，安装较小镗头时使用。

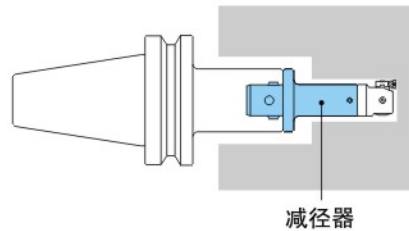


• 型号说明

CK21 - 55

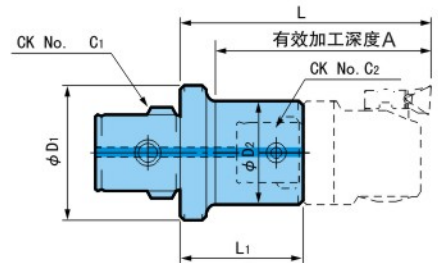
有效加工深度 A

• 从CK2减为CK1



中心内冷

減徑器



| 訂貨型號     | CK No. C1 | CK No. C2 | φ D1 | φ D2 | L    | A   | L1   | 质量 (kg) |
|----------|-----------|-----------|------|------|------|-----|------|---------|
| CK21- 55 | 2         | 1         | 24   | 19   | 68.5 | 55  | 36   | 0.10    |
| CK31- 60 |           |           |      |      | 73   | 60  | 40.5 | 0.14    |
| CK32- 60 | 3         | 2         | 31   | 24   | 70   | 60  | 34.5 | 0.16    |
| CK41- 75 |           |           |      |      | 90   | 75  | 57.5 | 0.25    |
| CK42- 75 | 4         | 2         | 39   | 24   | 87   | 75  | 51.5 | 0.28    |
| CK43- 75 |           |           |      |      | 87   | 75  | 47   | 0.32    |
| CK51- 70 | 5         | 1         | 50   | 19   | 90   | 70  | 57.5 | 0.38    |
| CK52- 70 |           |           |      |      | 87   | 70  | 51.5 | 0.40    |
| -100     | 2         | 2         | 50   | 24   | 117  | 100 | 81.5 | 0.51    |
| CK53- 70 |           |           |      |      | 87   | 70  | 47   | 0.54    |
| -100     | 3         | 3         | 50   | 31   | 117  | 100 | 77   | 0.64    |
| CK54- 70 |           |           |      |      | 87   | 70  | 40   | 0.47    |
| -100     | 4         | 4         | 50   | 39   | 117  | 100 | 70   | 0.82    |
| CK61- 65 |           |           |      |      | 99   | 65  | 66.5 | 0.84    |
| CK62- 80 | 6         | 1         | 64   | 19   | 96   | 80  | 60.5 | 0.69    |
| -115     |           |           |      |      | 131  | 115 | 95.5 | 0.98    |
| CK63- 80 | 2         | 2         | 64   | 24   | 96   | 80  | 56   | 0.75    |
| -115     |           |           |      |      | 131  | 115 | 91   | 1.12    |
| CK64- 80 | 3         | 3         | 64   | 31   | 96   | 80  | 49   | 0.80    |
| -115     |           |           |      |      | 131  | 115 | 84   | 1.28    |
| CK65- 80 | 4         | 4         | 64   | 39   | 96   | 80  | 39   | 0.92    |
| -115     |           |           |      |      | 131  | 115 | 74   | 1.33    |
| CK76-160 | 7         | 6         | 90   | 64   | 177  | 160 | 106  | 3.10    |

1. 表中L及A的尺寸是在装上EWN精镗头时的参考值。
2. 有内冷孔，可进行中心内冷。

BT基礎柄



中心内冷

加工中心用基础刀柄  
(日本规格)。

● 型号说明

BT30 - CK1 - 105

● CK No.  
● BT基础柄

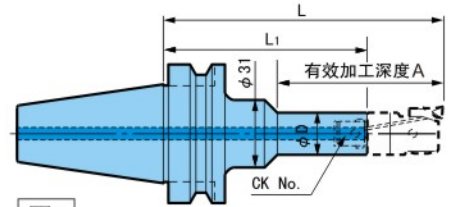


图1

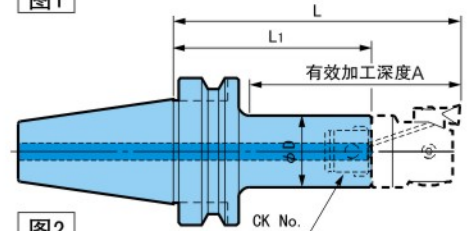


图2

| 订货型号         | CK No. | 图   | φD    | L     | L1    | A     | 质量 (kg) |
|--------------|--------|-----|-------|-------|-------|-------|---------|
| BT30-CK1-105 | 1      | 1   | 19    | 104.5 | 72    | 73    | 0.51    |
| -CK2- 75     | 2      | 2   | 24    | 73    | 37.5  | 48    | 0.3     |
| -120         | 117    |     |       | 82.5  | 93    | 0.57  |         |
| -CK3- 80     | 3      | 2   | 31    | 79    | 39    | 53    | 0.45    |
| -120         | 119    |     |       | 79    | 93    | 0.67  |         |
| -CK4- 85     | 4      | 2   | 39    | 85    | 38    | 58    | 0.46    |
| -120         | 120    |     |       | 73    | 93    | 0.76  |         |
| -CK5-120     | 5      | 2   | 50    | 120   | 63    | 93    | 0.80    |
| BT40-CK1-105 | 1      |     |       | 19    | 104.5 | 72    | 73      |
| -CK2- 80     | 2      | 2   | 24    | 78    | 42.5  | 48    | 1.0     |
| -120         | 118    |     |       | 82.5  | 88    | 1.2   |         |
| -CK3- 85     | 3      | 2   | 31    | 84    | 44    | 53    | 1.1     |
| -135         | 134    |     |       | 94    | 103   | 1.3   |         |
| -CK4- 90     | 4      | 2   | 39    | 90    | 43    | 58    | 1.2     |
| -135         | 135    |     |       | 88    | 103   | 1.5   |         |
| -CK5-105     | 5      | 2   | 50    | 105   | 48    | 73    | 1.2     |
| -135         | 135    |     |       | 78    | 103   | 1.6   |         |
| -CK6-135     | 6      | 2   | 64    | 135   | 64    | 103   | 1.6     |
| BT50-CK1-135 | 1      |     |       | 19    | 134.5 | 102   | 73      |
| -CK2- 90     | 2      | 2   | 24    | 88    | 52.5  | 47    | 3.8     |
| -150         | 148    |     |       | 112.5 | 107   | 4.0   |         |
| -CK3- 95     | 3      | 2   | 31    | 94    | 54    | 52    | 3.9     |
| -165         | 164    |     |       | 124   | 122   | 4.3   |         |
| -CK4-105     | 4      | 2   | 39    | 105   | 58    | 62    | 4.3     |
| -165         | 165    |     |       | 118   | 122   | 4.5   |         |
| -225         | 225    | 178 | 182   | 4.9   |       |       |         |
| -CK5-120     | 5      | 2   | 50    | 120   | 63    | 77    | 4.0     |
| -165         | 165    |     |       | 108   | 122   | 4.7   |         |
| -240         | 240    | 183 | 197   | 5.9   |       |       |         |
| -285         | 285    | 228 | 242   | 6.5   |       |       |         |
| -CK6-165     | 6      | 2   | 64    | 165   | 94    | 122   | 4.8     |
| -240         | 240    |     |       | 169   | 197   | 6.7   |         |
| -300         | 300    | 229 | 257   | 8.2   |       |       |         |
| -CK7-210     | 7      | 2   | 90    | 210 ※ | 93    | 172 ※ | 5.0     |
| -300         | 300 ※  |     |       | 183   | 262 ※ | 8.3   |         |
| -360         | 360 ※  | 243 | 322 ※ | 12.4  |       |       |         |

- 表中L及A的尺寸是在装上EWN精镗头时的参考值。  
※记号的部分是指装上EWN150(大径用)时的尺寸,此时A是指从刀尖到法兰底面的距离。
- 装上镗头时刀尖方向与传动槽方向是同相位。
- 各种刀柄标准对应中心内冷。

上表以外尺寸的刀柄也可制作。

※在CK1~CK3的深孔加工时,请使用CK硬质合金直杆刀柄。  
(此时必须有CK侧固连接块。)

IV/DV基礎柄

IV/DV基礎柄

中心内冷

IV: ISO7388/1、 DV: DIN69871-A。

●型号说明

IV40 - CK1 - 75

ISO基础柄 CK No.

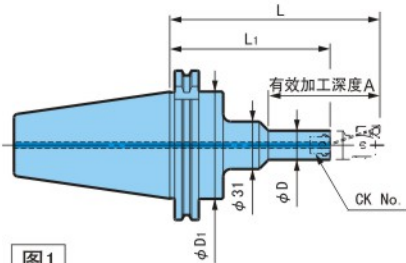


图1

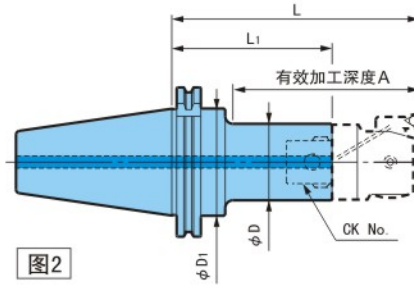


图2

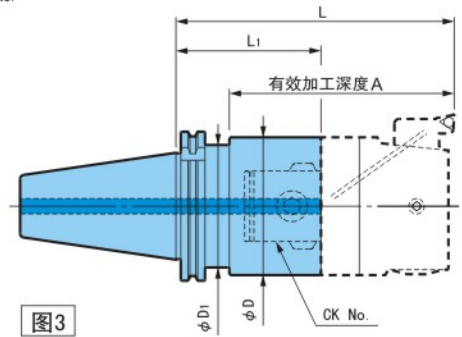


图3

| 訂貨型號         | CK No. | 图   | φ D1 | φ D | L     | L1  | A    |
|--------------|--------|-----|------|-----|-------|-----|------|
| IV40-CK1- 75 | 1      | 1   | 44.7 | 19  | 107.5 | 75  | 69.5 |
| -CK2- 85     | 2      | 2   |      | 24  | 120.5 | 85  | 82.5 |
| -CK3- 95     | 3      |     |      | 31  | 135   | 95  | 97   |
| -CK4- 90     | 4      | 39  |      | 137 | 90    | 101 |      |
| DV40-CK5- 80 | 5      | 3   | 49.6 | 50  | 137   | 80  | 102  |
| -CK6- 65     | 6      |     |      | 64  | 136   | 65  | 101  |
| IV50-CK1-105 | 1      | 2   | 70.1 | 19  | 137.5 | 105 | 73   |
| -CK2-115     | 2      |     |      | 24  | 150.5 | 115 | 107  |
| -CK3-125     | 3      |     |      | 31  | 165   | 125 | 122  |
| -CK4-120     | 4      |     |      | 39  | 167   | 120 | 122  |
| -180         |        |     |      |     | 227   | 180 | 182  |
| -CK5-105     | 5      |     |      | 50  | 162   | 105 | 122  |
| -180         |        |     |      |     | 237   | 180 | 197  |
| -225         |        |     |      |     | 282   | 225 | 242  |
| -CK6- 95     | 6      |     |      | 64  | 166   | 95  | 130  |
| -170         |        |     |      |     | 241   | 170 | 205  |
| -230         |        | 301 | 230  |     | 267   |     |      |
| DV50-CK7- 95 | 7      | 3   | 80   | 90  | 182   | 95  | 147  |

- 表中L及A的尺寸是在装上EWN精镗头时的参考值。
- 装上镗头时刀尖方向与传动槽方向同相位。
- 标准对应中心内冷。
- IV刀柄 (ISO7388/1) 可以在DIN规格机床上使用, 但DV (DIN69871-A) 刀柄安装在ISO规格机床上有可能发生干涉。请在订购前确认。

上表以外尺寸的刀柄也可制作。

ANSI (美国规格) 刀柄 (AV) 也可制作。



HSK基礎柄

HSK基礎柄 **A型/F型**

中心内冷

DIN规格HSK主轴的加工中心用鏜刀基础柄

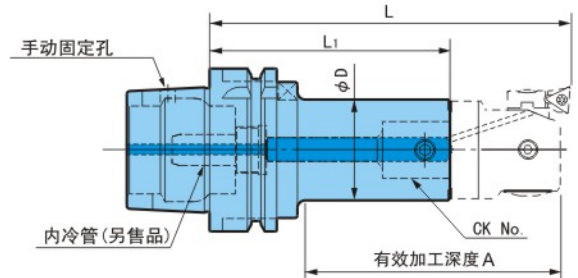


● 型号说明

HSK-A 40 - CK1 - 73

● CK No.

● 刀柄规格



A型

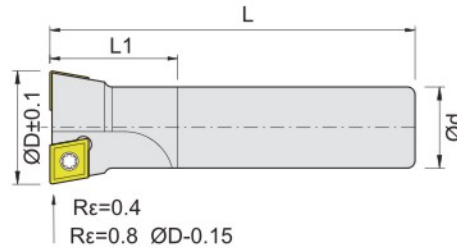
| 訂貨型號             | CK No. | L   | A   | L <sub>1</sub> | φD | 加工范围    |
|------------------|--------|-----|-----|----------------|----|---------|
| HSK-A 40-CK1- 73 | 1      | 105 | 73  | 72.5           | 19 | 20~ 36  |
| -CK2- 40         | 2      | 75  | 44  | 39.5           | 24 | 25~ 47  |
| - 85             |        | 120 | 89  | 84.5           |    |         |
| -CK3- 45         | 3      | 85  | 57  | 45             | 31 | 32~ 60  |
| - 80             |        | 120 | 92  | 80             |    |         |
| -CK4- 53         | 4      | 100 | 100 | 53             | 39 | 41~ 74  |
| - 73             |        | 120 | 120 | 73             |    |         |
| HSK-A 50-CK1- 73 | 1      | 105 | 65  | 72.5           | 19 | 20~ 36  |
| CK2- 85          | 2      | 117 | 80  | 84.5           | 24 | 25~ 47  |
| CK3- 80          | 3      | 120 | 82  | 80             | 31 | 32~ 60  |
| CK4- 73          | 4      |     | 76  | 73             | 39 | 41~ 74  |
| CK5- 83          | 5      | 140 | —   | 83             | 50 | 53~ 95  |
| HSK-A 63-CK1- 78 | 1      | 110 | 73  | 77.5           | 19 | 20~ 36  |
| -CK2- 90         | 2      | 125 | 88  | 89.5           | 24 | 25~ 47  |
| -CK3-100         | 3      | 140 | 103 | 100            | 31 | 32~ 60  |
| -CK4- 93         | 4      | 140 | 103 | 93             | 39 | 41~ 74  |
| -CK5- 83         | 5      | 140 | 105 | 83             | 50 | 53~ 95  |
| -CK6- 79         | 6      | 150 | —   | 79             | 64 | 68~203  |
| HSK-A100-CK1-103 | 1      | 135 | 73  | 102.5          | 19 | 20~ 36  |
| -CK2-115         | 2      | 150 | 107 | 114.5          | 24 | 25~ 47  |
| -CK3-125         | 3      | 165 | 122 | 125            | 31 | 32~ 60  |
| -CK4-118         | 4      | 165 | 122 | 118            | 39 | 41~ 74  |
| -178             |        | 225 | 182 | 178            |    |         |
| -CK5-108         | 5      | 1   | 122 | 108            | 50 | 53~ 95  |
| -183             |        | 240 | 197 | 183            |    |         |
| -228             |        | 285 | 242 | 228            |    |         |
| -CK6- 94         |        | 165 | 122 | 94             |    |         |
| -169             | 6      | 240 | 197 | 169            | 64 | 68~203  |
| -229             |        | 300 | 257 | 229            |    |         |
| -CK7-123         | 7      | 210 | 181 | 123            | 90 | 100~203 |
| -273             |        | 360 | 331 | 273            |    |         |

1. 表中L及A的尺寸是在装上EWN精鏜头时的参考值。  
 2. 装上鏜头时刀尖方向与传动槽方向同相位。  
 精鏜头的刀尖朝着有方向槽的一面。

3. 标准对应中心内冷。  
 4. 不附带内冷管，请另外订购。

上表以外尺寸的刀柄也可制作。

固定式粗鏢刀



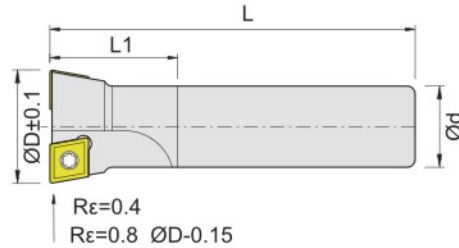
| Item code    | L   | Item code    | L   | Item code    | L   | Item code    | L   | Dimensions,mm |    |    | Insert     | Teeth |
|--------------|-----|--------------|-----|--------------|-----|--------------|-----|---------------|----|----|------------|-------|
|              |     |              |     |              |     |              |     | D Rε=0.4      | d  | L1 |            |       |
| TB12-S16-120 | 120 | TB12-S16-160 | 160 | TB12-S16-200 | 200 |              |     | 11.8          | 16 | 30 | CC..060204 | 1     |
| TB13-S16-120 |     | TB13-S16-160 |     | TB13-S16-200 |     |              |     | 12.8          |    |    |            |       |
| TB14-S16-120 |     | TB14-S16-160 |     | TB14-S16-200 |     |              |     | 13.8          |    |    |            |       |
| TB15-S16-120 |     | TB15-S16-160 |     | TB15-S16-200 |     |              |     | 14.8          |    |    |            |       |
| TB16-S16-120 | 120 | TB16-S16-160 | 160 | TB16-S16-200 | 200 |              |     | 15.8          | 16 | 30 | CC..060204 | 2     |
| TB17-S16-120 |     | TB17-S16-160 |     | TB17-S16-200 |     |              |     | 16.8          |    |    |            |       |
| TB18-S16-120 |     | TB18-S16-160 |     | TB18-S16-200 |     | TB18-S16-250 | 250 | 17.8          |    |    |            |       |
| TB19-S16-120 |     | TB19-S16-160 |     | TB19-S16-200 |     | TB19-S16-250 |     | 18.8          |    |    |            |       |
| TB20-S16-120 |     | TB20-S16-160 |     | TB20-S16-200 |     | TB20-S16-250 |     | 19.8          |    |    |            |       |
| TB21-S16-120 | 120 | TB21-S16-160 | 160 | TB21-S16-200 | 200 | TB21-S16-250 | 250 | 20.8          | 16 | 30 |            | 2     |
| TB22-S16-120 |     | TB22-S16-160 |     | TB22-S16-200 |     | TB22-S16-250 |     | 21.8          |    |    |            |       |
| TB23-S20-130 | 130 | TB23-S20-160 | 160 | TB23-S20-200 | 200 | TB23-S20-250 | 250 | 22.8          | 20 | 30 | CC..060204 | 2     |
| TB24-S20-130 |     | TB24-S20-160 |     | TB24-S20-200 |     | TB24-S20-250 |     | 23.8          |    |    |            |       |
| TB25-S20-130 |     | TB25-S20-160 |     | TB25-S20-200 |     | TB25-S20-250 |     | 24.8          |    |    |            |       |
| TB26-S20-130 | 130 | TB26-S20-160 | 160 | TB26-S20-200 | 200 | TB26-S20-250 | 250 | 25.8          | 20 | 30 | CC..09T304 | 2     |
| TB27-S20-130 |     | TB27-S20-160 |     | TB27-S20-200 |     | TB27-S20-250 |     | 26.8          |    |    |            |       |
| TB28-S20-130 |     | TB28-S20-160 |     | TB28-S20-200 |     | TB28-S20-250 |     | 27.8          |    |    |            |       |
| TB29-S20-130 |     | TB29-S20-160 |     | TB29-S20-200 |     | TB29-S20-250 |     | 28.8          |    |    |            |       |
| TB30-S25-160 | 160 | TB30-S25-200 | 200 | TB30-S25-250 | 250 | TB30-S25-300 | 300 | 29.8          | 25 | 40 | CC..09T304 | 2     |
| TB31-S25-160 | 160 | TB31-S25-200 | 200 | TB31-S25-250 | 250 | TB31-S25-300 | 300 | 30.8          | 25 | 40 | CC..09T304 | 2     |
| TB32-S25-160 |     | TB32-S25-200 |     | TB32-S25-250 |     | TB32-S25-300 |     | 31.8          |    |    |            |       |
| TB33-S25-160 |     | TB33-S25-200 |     | TB33-S25-250 |     | TB33-S25-300 |     | 32.8          |    |    |            |       |
| TB34-S25-160 |     | TB34-S25-200 |     | TB34-S25-250 |     | TB34-S25-300 |     | 33.8          |    |    |            |       |
| TB35-S25-160 |     | TB35-S25-200 |     | TB35-S25-250 |     | TB35-S25-300 |     | 34.8          |    |    |            |       |
| TB36-S25-160 | 160 | TB36-S25-200 | 200 | TB36-S25-250 | 250 | TB36-S25-300 | 300 | 35.8          | 25 | 40 | CC..09T304 | 2     |
| TB37-S25-160 |     | TB37-S25-200 |     | TB37-S25-250 |     | TB37-S25-300 |     | 36.8          |    |    |            |       |
| TB38-S25-160 |     | TB38-S25-200 |     | TB38-S25-250 |     | TB38-S25-300 |     | 37.8          |    |    |            |       |
| TB39-S25-160 |     | TB39-S25-200 |     | TB39-S25-250 |     | TB39-S25-300 |     | 38.8          |    |    |            |       |
| TB40-S25-160 |     | TB40-S25-200 |     | TB40-S25-250 |     | TB40-S25-300 |     | 39.8          |    |    |            |       |
| TB41-S32-200 | 200 | TB41-S32-250 | 250 | TB41-S32-300 | 300 | TB41-S32-350 | 350 | 40.8          | 32 | 45 |            | 2     |
| TB42-S32-200 |     | TB42-S32-250 |     | TB42-S32-300 |     |              |     | 41.8          |    |    |            |       |
| TB43-S32-200 |     | TB43-S32-250 |     | TB43-S32-300 |     |              |     | 42.8          |    |    |            |       |
| TB44-S32-200 |     | TB44-S32-250 |     | TB44-S32-300 |     |              |     | 43.8          |    |    |            |       |
| TB45-S32-200 |     | TB45-S32-250 |     | TB45-S32-300 |     |              |     | 44.8          |    |    |            |       |
| TB46-S32-200 | 200 | TB46-S32-250 | 250 | TB46-S32-300 | 300 |              |     | 45.8          | 32 | 45 |            | 2     |
| TB47-S32-200 |     | TB47-S32-250 |     | TB47-S32-300 |     |              |     | 46.8          |    |    |            |       |
| TB48-S32-200 |     | TB48-S32-250 |     | TB48-S32-300 |     |              |     | 47.8          |    |    |            |       |
| TB49-S32-200 |     | TB49-S32-250 |     | TB49-S32-300 |     |              |     | 48.8          |    |    |            |       |
| TB50-S32-200 |     | TB50-S32-250 |     | TB50-S32-300 |     |              |     | 49.8          |    |    |            |       |
| TB51-S32-200 | 200 | TB51-S32-250 | 250 | TB51-S32-300 | 300 |              |     | 50.8          | 32 | 45 |            | 2     |
| TB52-S32-200 |     | TB52-S32-250 |     | TB52-S32-300 |     |              |     | 51.8          |    |    |            |       |
| TB53-S32-200 |     | TB53-S32-250 |     | TB53-S32-300 |     |              |     | 52.8          |    |    |            |       |
| TB54-S32-200 |     | TB54-S32-250 |     | TB54-S32-300 |     |              |     | 53.8          |    |    |            |       |
| TB55-S32-200 |     | TB55-S32-250 |     | TB55-S32-300 |     |              |     | 54.8          |    |    |            |       |
| TB56-S32-200 | 200 | TB56-S32-250 | 250 | TB56-S32-300 | 300 |              |     | 55.8          | 32 | 45 |            | 2     |
| TB57-S32-200 |     | TB57-S32-250 |     | TB57-S32-300 |     |              |     | 56.8          |    |    |            |       |



固定式粗鏢刀



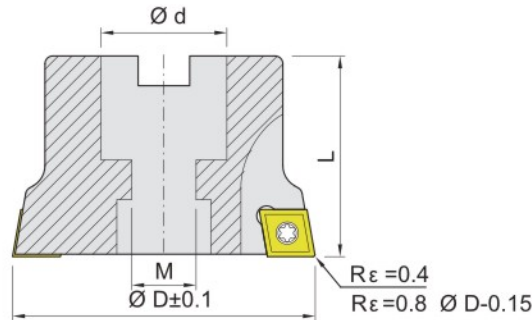
NEW



| Item code     | L   | Item code     | L   | Item code     | L   | Dimensions,mm |    |    | Insert     | Teeth |
|---------------|-----|---------------|-----|---------------|-----|---------------|----|----|------------|-------|
|               |     |               |     |               |     | D Rε=0.4      | d  | L1 |            |       |
| TB12E-S16-120 | 120 | TB12E-S16-160 | 160 | TB12E-S16-200 | 200 | 12.0          | 16 | 30 | CC..060204 | 1     |
| TB13E-S16-120 |     | TB13E-S16-160 |     | TB13E-S16-200 |     | 13.0          |    |    |            |       |
| TB14E-S16-120 |     | TB14E-S16-160 |     | TB14E-S16-200 |     | 14.0          |    |    |            |       |
| TB15E-S16-120 |     | TB15E-S16-160 |     | TB15E-S16-200 |     | 15.0          |    |    |            |       |
| TB16E-S16-120 | 120 | TB16E-S16-160 | 160 | TB16E-S16-200 | 200 | 16.0          | 16 | 30 | CC..060204 | 2     |
| TB17E-S16-120 |     | TB17E-S16-160 |     | TB17E-S16-200 |     | 17.0          |    |    |            |       |
| TB18E-S16-120 |     | TB18E-S16-160 |     | TB18E-S16-200 |     | 18.0          |    |    |            |       |
| TB19E-S16-120 |     | TB19E-S16-160 |     | TB19E-S16-200 |     | 19.0          |    |    |            |       |
| TB20E-S16-120 |     | TB20E-S16-160 |     | TB20E-S16-200 |     | 20.0          |    |    |            |       |
| TB21E-S16-120 | 120 | TB21E-S16-160 | 160 | TB21E-S16-200 | 200 | 21.0          | 16 | 30 | CC..060204 | 2     |
| TB22E-S16-120 |     | TB22E-S16-160 |     | TB22E-S16-200 |     | 22.0          |    |    |            |       |
| TB23E-S20-130 | 130 | TB23E-S20-160 | 160 | TB23E-S20-200 | 200 | 23.0          | 20 | 30 | CC..060204 | 2     |
| TB24E-S20-130 |     | TB24E-S20-160 |     | TB24E-S20-200 |     | 24.0          |    |    |            |       |
| TB25E-S20-130 |     | TB25E-S20-160 |     | TB25E-S20-200 |     | 25.0          |    |    |            |       |
| TB26E-S20-130 | 130 | TB26E-S20-160 | 160 | TB26E-S20-200 | 200 | 26.0          | 20 | 30 | CC..09T304 | 2     |
| TB27E-S20-130 |     | TB27E-S20-160 |     | TB27E-S20-200 |     | 27.0          |    |    |            |       |
| TB28E-S20-130 |     | TB28E-S20-160 |     | TB28E-S20-200 |     | 28.0          |    |    |            |       |
| TB29E-S20-130 |     | TB29E-S20-160 |     | TB29E-S20-200 |     | 29.0          |    |    |            |       |
| TB30E-S25-160 | 160 | TB30E-S25-200 | 200 | TB30E-S25-250 | 250 | 30.0          | 25 | 40 |            |       |
| TB31E-S25-160 | 160 | TB31E-S25-200 | 200 | TB31E-S25-250 | 250 | 31.0          | 25 | 40 | CC..09T304 | 2     |
| TB32E-S25-160 |     | TB32E-S25-200 |     | TB32E-S25-250 |     | 32.0          |    |    |            |       |
| TB33E-S25-160 |     | TB33E-S25-200 |     | TB33E-S25-250 |     | 33.0          |    |    |            |       |
| TB34E-S25-160 |     | TB34E-S25-200 |     | TB34E-S25-250 |     | 34.0          |    |    |            |       |
| TB35E-S25-160 |     | TB35E-S25-200 |     | TB35E-S25-250 |     | 35.0          |    |    |            |       |
| TB36E-S25-160 | 160 | TB36E-S25-200 | 200 | TB36E-S25-250 | 250 | 36.0          | 25 | 40 | CC..09T304 | 2     |
| TB37E-S25-160 |     | TB37E-S25-200 |     | TB37E-S25-250 |     | 37.0          |    |    |            |       |
| TB38E-S25-160 |     | TB38E-S25-200 |     | TB38E-S25-250 |     | 38.0          |    |    |            |       |
| TB39E-S25-160 |     | TB39E-S25-200 |     | TB39E-S25-250 |     | 39.0          |    |    |            |       |
| TB40E-S25-160 |     | TB40E-S25-200 |     | TB40E-S25-250 |     | 40.0          |    |    |            |       |
| TB41E-S32-200 | 200 | TB41E-S32-250 | 250 | TB41E-S32-300 | 300 | 41.0          | 32 | 45 |            |       |
| TB42E-S32-200 |     | TB42E-S32-250 |     | TB42E-S32-300 |     | 42.0          |    |    |            |       |
| TB43E-S32-200 |     | TB43E-S32-250 |     | TB43E-S32-300 |     | 43.0          |    |    |            |       |
| TB44E-S32-200 |     | TB44E-S32-250 |     | TB44E-S32-300 |     | 44.0          |    |    |            |       |
| TB45E-S32-200 |     | TB45E-S32-250 |     | TB45E-S32-300 |     | 45.0          |    |    |            |       |
| TB46E-S32-200 | 200 | TB46E-S32-250 | 250 | TB46E-S32-300 | 300 | 46.0          | 32 | 45 | CC..09T304 | 2     |
| TB47E-S32-200 |     | TB47E-S32-250 |     | TB47E-S32-300 |     | 47.0          |    |    |            |       |
| TB48E-S32-200 |     | TB48E-S32-250 |     | TB48E-S32-300 |     | 48.0          |    |    |            |       |
| TB49E-S32-200 |     | TB49E-S32-250 |     | TB49E-S32-300 |     | 49.0          |    |    |            |       |
| TB50E-S32-200 |     | TB50E-S32-250 |     | TB50E-S32-300 |     | 50.0          |    |    |            |       |
| TB51E-S32-200 | 200 | TB51E-S32-250 | 250 | TB51E-S32-300 | 300 | 51.0          | 32 | 45 | CC..09T304 | 2     |
| TB52E-S32-200 |     | TB52E-S32-250 |     | TB52E-S32-300 |     | 52.0          |    |    |            |       |
| TB53E-S32-200 |     | TB53E-S32-250 |     | TB53E-S32-300 |     | 53.0          |    |    |            |       |
| TB54E-S32-200 |     | TB54E-S32-250 |     | TB54E-S32-300 |     | 54.0          |    |    |            |       |
| TB55E-S32-200 |     | TB55E-S32-250 |     | TB55E-S32-300 |     | 55.0          |    |    |            |       |
| TB56E-S32-200 | 200 | TB56E-S32-250 | 250 | TB56E-S32-300 | 300 | 56.0          | 32 | 45 | CC..09T304 | 2     |
| TB57E-S32-200 |     | TB57E-S32-250 |     | TB57E-S32-300 |     | 57.0          |    |    |            |       |



固定式粗鏢刀



| Item code<br>(d=22.0) | Item code<br>(d=25.4) | Insert<br>     | Item code<br>(d=22.0,25.4) | Insert<br>     | D<br>Rε=0.4    | Teeth |
|-----------------------|-----------------------|----------------|----------------------------|----------------|----------------|-------|
| TB45-22.0-CC09        |                       | CC..09T304     |                            | CC..120404     | 44.8           | 2     |
| TB46-22.0-CC09        |                       |                | 45.8                       |                |                |       |
| TB47-22.0-CC09        |                       |                | 46.8                       |                |                |       |
| TB48-22.0-CC09        |                       |                | 47.8                       |                |                |       |
| TB49-22.0-CC09        |                       |                | 48.8                       |                |                |       |
| TB50-22.0-CC09        | TB50-25.4-CC09        |                | 49.8                       |                |                |       |
| TB51-22.0-CC09        | TB51-25.4-CC09        | CC..09T304     |                            | CC..120404     | 50.8           | 2     |
| TB52-22.0-CC09        | TB52-25.4-CC09        |                | 51.8                       |                |                |       |
| TB53-22.0-CC09        | TB53-25.4-CC09        |                | 52.8                       |                |                |       |
| TB54-22.0-CC09        | TB54-25.4-CC09        |                | 53.8                       |                |                |       |
| TB55-22.0-CC09        | TB55-25.4-CC09        |                | TB55-22.0-CC12             |                | 54.8           |       |
| TB56-22.0-CC09        | TB56-25.4-CC09        | CC..09T304     | TB56-22.0-CC12             | CC..120404     | 55.8           | 2     |
| TB57-22.0-CC09        | TB57-25.4-CC09        |                | TB57-22.0-CC12             |                | 56.8           |       |
| TB58-22.0-CC09        | TB58-25.4-CC09        |                | TB58-22.0-CC12             |                | 57.8           |       |
| TB59-22.0-CC09        | TB59-25.4-CC09        |                | TB59-22.0-CC12             |                | 58.8           |       |
| TB60-22.0-CC09        | TB60-25.4-CC09        |                | TB60-22.0-CC12             |                | 59.8           |       |
| TB61-22.0-CC09        | TB61-25.4-CC09        |                | CC..09T304                 |                | TB61-25.4-CC12 |       |
| TB62-22.0-CC09        | TB62-25.4-CC09        | TB62-25.4-CC12 |                            | 61.8           |                |       |
| TB63-22.0-CC09        | TB63-25.4-CC09        | TB63-25.4-CC12 |                            | 62.8           |                |       |
| TB64-22.0-CC09        | TB64-25.4-CC09        | TB64-25.4-CC12 |                            | 63.8           |                |       |
| TB65-22.0-CC09        | TB65-25.4-CC09        | TB65-25.4-CC12 |                            | 64.8           |                |       |
| TB66-22.0-CC09        | TB66-25.4-CC09        | CC..09T304     |                            | TB66-25.4-CC12 | CC..120404     | 65.8  |
| TB67-22.0-CC09        | TB67-25.4-CC09        |                | TB67-25.4-CC12             | 66.8           |                |       |
| TB68-22.0-CC09        | TB68-25.4-CC09        |                | TB68-25.4-CC12             | 67.8           |                |       |
| TB69-22.0-CC09        | TB69-25.4-CC09        |                | TB69-25.4-CC12             | 68.8           |                |       |
| TB70-22.0-CC09        | TB70-25.4-CC09        |                | TB70-25.4-CC12             | 69.8           |                |       |
| TB71-22.0-CC09        | TB71-25.4-CC09        | CC..09T304     | TB71-25.4-CC12             | CC..120404     | 70.8           | 2     |
| TB72-22.0-CC09        | TB72-25.4-CC09        |                | TB72-25.4-CC12             |                | 71.8           |       |
|                       | TB73-25.4-CC09        |                | TB73-25.4-CC12             |                | 72.8           |       |
|                       | TB74-25.4-CC09        |                | TB74-25.4-CC12             |                | 73.8           |       |
| TB75-22.0-CC09        | TB75-25.4-CC09        |                | TB75-25.4-CC12             |                | 74.8           |       |
|                       | TB76-25.4-CC09        | CC..09T304     | TB76-25.4-CC12             | CC..120404     | 75.8           | 2     |
|                       | TB77-25.4-CC09        |                | TB77-25.4-CC12             |                | 76.8           |       |
|                       | TB78-25.4-CC09        |                | TB78-25.4-CC12             |                | 77.8           |       |
|                       | TB79-25.4-CC09        |                | TB79-25.4-CC12             |                | 78.8           |       |
|                       | TB80-25.4-CC09        |                | TB80-25.4-CC12             |                | 79.8           |       |

固定式粗鏢刀

| Item code<br>(d=25.4)  | Insert<br> | Item code<br>(d=25.4)   | Item code<br>(d=31.75)   |            | D<br>Rε=0.4                               | Teeth |
|--|------------|---|--|------------|---|-------|
| TB81-25.4-CC09<br>TB82-25.4-CC09<br><br>TB84-25.4-CC09<br>TB85-25.4-CC09 | CC..09T304 | TB81-25.4-CC12<br>TB82-25.4-CC12<br>TB83-25.4-CC12<br>TB84-25.4-CC12<br>TB85-25.4-CC12  |  | CC..120404 | 80.8<br>81.8<br>82.8<br>83.8<br>84.8      | 2     |
| TB86-25.4-CC09<br><br>TB88-25.4-CC09<br><br>TB90-25.4-CC09               | CC..09T304 | TB86-25.4-CC12<br>TB87-25.4-CC12<br>TB88-25.4-CC12<br>TB89-25.4-CC12<br>TB90-25.4-CC12  |  | CC..120404 | 85.8<br>86.8<br>87.8<br>88.8<br>89.8      | 2     |
| TB92-25.4-CC09<br><br>TB94-25.4-CC09<br>TB95-25.4-CC09                   | CC..09T304 | TB91-25.4-CC12<br>TB92-25.4-CC12<br>TB93-25.4-CC12<br>TB94-25.4-CC12<br>TB95-25.4-CC12  |  | CC..120404 | 90.8<br>91.8<br>92.8<br>93.8<br>94.8      | 2     |
| TB96-25.4-CC09<br><br>TB98-25.4-CC09<br><br>TB100-25.4-CC09              | CC..09T304 | TB96-25.4-CC12<br>TB97-25.4-CC12<br>TB98-25.4-CC12<br>TB99-25.4-CC12<br>TB100-25.4-CC12 | TB100-31.75-CC12   | CC..120404 | 95.8<br>96.8<br>97.8<br>98.8<br>99.8      | 2     |
| TB104-25.4-CC09<br>TB105-25.4-CC09                                       | CC..09T304 | TB101-25.4-CC12<br>TB102-25.4-CC12<br><br>TB105-25.4-CC12                               | TB101-31.75-CC12<br>TB102-31.75-CC12<br>TB103-31.75-CC12<br>TB104-31.75-CC12<br>TB105-31.75-CC12 | CC..120404 | 100.8<br>101.8<br>102.8<br>103.8<br>104.8 | 2     |
|  | CC..09T304 | TB110-25.4-CC12   | TB106-31.75-CC12<br>TB107-31.75-CC12<br>TB108-31.75-CC12<br>TB109-31.75-CC12<br>TB110-31.75-CC12 | CC..120404 | 105.8<br>106.8<br>107.8<br>108.8<br>109.8 | 2     |
| TB112-25.4-CC09<br><br>TB115-25.4-CC09                                   | CC..09T304 | TB112-25.4-CC12<br><br>TB115-25.4-CC12  | TB111-31.75-CC12<br>TB112-31.75-CC12<br>TB113-31.75-CC12<br>TB114-31.75-CC12<br>TB115-31.75-CC12 | CC..120404 | 110.8<br>111.8<br>112.8<br>113.8<br>114.8 | 2     |
| TB120-25.4-CC09  | CC..09T304 | TB118-25.4-CC12<br><br>TB120-25.4-CC12  | TB116-31.75-CC12<br>TB117-31.75-CC12<br>TB118-31.75-CC12<br>TB119-31.75-CC12<br>TB120-31.75-CC12 | CC..120404 | 115.8<br>116.8<br>117.8<br>118.8<br>119.8 | 2     |
| TB122-25.4-CC09  | CC..09T304 |   | TB121-31.75-CC12<br>TB122-31.75-CC12<br>TB123-31.75-CC12<br>TB124-31.75-CC12<br>TB125-31.75-CC12 | CC..120404 | 120.8<br>121.8<br>122.8<br>123.8<br>124.8 | 2     |
|  |            |   | TB126-31.75-CC12<br>TB127-31.75-CC12<br>TB128-31.75-CC12<br>TB129-31.75-CC12<br>TB130-31.75-CC12 | CC..120404 | 125.8<br>126.8<br>127.8<br>128.8<br>129.8 | 2     |

固定式粗鏢刀

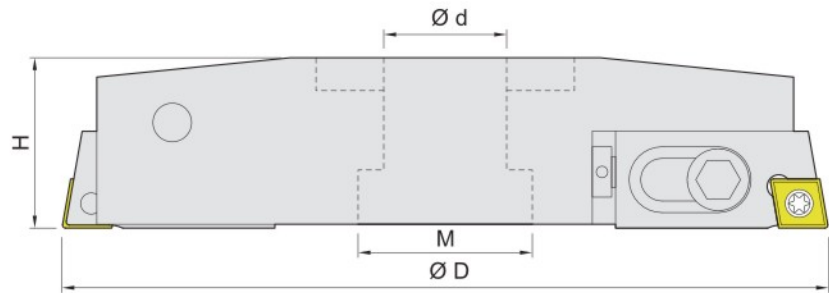
| Item code<br>(d=25.4) | Insert<br> | Item code<br>(d=25.4) | Item code<br>(d=31.75)   | Insert<br> | D<br>Rε=0.4                               | Teeth       |
|-----------------------|------------|-----------------------|--|------------|---|-------------|
|                       |            |                       | TB131-31.75-CC12<br>TB132-31.75-CC12<br>TB133-31.75-CC12<br>TB134-31.75-CC12<br>TB135-31.75-CC12 | CC..120404 | 130.8<br>131.8<br>132.8<br>133.8<br>134.8 | 2           |
|                       |            |                       | TB136-31.75-CC12<br>TB137-31.75-CC12<br>TB138-31.75-CC12<br>TB139-31.75-CC12<br>TB140-31.75-CC12 | CC..120404 | 135.8<br>136.8<br>137.8<br>138.8<br>139.8 | 2           |
|                       |            |                       | TB141-31.75-CC12<br>TB142-31.75-CC12<br>TB143-31.75-CC12<br>TB144-31.75-CC12<br>TB145-31.75-CC12 | CC..120404 | 140.8<br>141.8<br>142.8<br>143.8<br>144.8 | 2           |
|                       |            |                       | TB146-31.75-CC12<br>TB147-31.75-CC12<br>TB148-31.75-CC12<br>TB149-31.75-CC12<br>TB150-31.75-CC12 | CC..120404 | 145.8<br>146.8<br>147.8<br>148.8<br>149.8 | 2           |
|                       |            |                       | TB151-31.75-CC12<br>TB155-31.75-CC12<br>TB156-31.75-CC12<br>TB160-31.75-CC12                     | CC..120404 | 150.8<br>154.8<br>155.8<br>159.8          | 2           |
|                       |            |                       | TB161-31.75-CC12<br>TB165-31.75-CC12<br>TB170-31.75-CC12   | CC..120404 | 160.8<br>164.8<br>169.8                   | 2           |
|                       |            |                       | TB175-31.75-CC12<br>TB180-31.75-CC12   | CC..120404 | 174.8<br>179.8                            | 2           |
|                       |            |                       | TB185-31.75-CC12<br>TB187-31.75-CC12<br>TB190-31.75-CC12   | CC..120404 | 184.8<br>186.8<br>189.8                   | 2           |
|                       |            |                       | TB195-31.75-CC12<br>TB200-31.75-CC12<br>TB201-31.75-CC12   | CC..120404 | 194.8<br>199.8<br>200.8                   | 2<br>2<br>2 |

| Insert     | Screw   | Wrench |
|------------|---------|--------|
| CC..060204 | MS2506A | TF9    |
| CC..09T304 | MS4011A | TF15   |
| CC..120404 | MS5011A | TF20   |

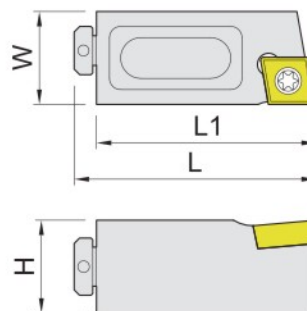
| Dimensions,mm   | d     | M  | L  |
|-----------------|-------|----|----|
| TB...-22.0-...  | 22.0  | 11 | 50 |
| TB...-25.4-...  | 25.4  | 13 | 50 |
| TB...-31.75-... | 31.75 | 13 | 50 |



可調式粗鏢刀杆



| Item code       | Rrage |      | Dimensions,mm |    |    | Teeth | Cartridges  | Screw   |
|-----------------|-------|------|---------------|----|----|-------|-------------|---------|
|                 | Dmin  | Dmax | d             | M  | H  |       |             |         |
| TBJ175-25-31.75 | 175   | 200  | 31.75         | 45 | 43 | 2     | TBS925-CC12 | HTM1035 |
| TBJ200-25-31.75 | 200   | 225  |               |    |    |       |             |         |
| TBJ225-25-31.75 | 225   | 250  |               |    |    |       |             |         |
| TBJ250-25-31.75 | 250   | 275  |               |    |    |       |             |         |
| TBJ275-25-31.75 | 275   | 300  |               |    |    |       |             |         |
| TBJ300-25-31.75 | 300   | 325  |               |    |    |       |             |         |
| TBJ325-25-31.75 | 325   | 350  |               |    |    |       |             |         |
| TBJ350-25-31.75 | 350   | 375  |               |    |    |       |             |         |
| TBJ375-25-31.75 | 375   | 400  |               |    |    |       |             |         |
| TBJ400-25-31.75 | 400   | 425  |               |    |    |       |             |         |



| Item code   | Dimensions,mm |    |    |    |    | Insert     | Screw  | Screw   | Wrench |
|-------------|---------------|----|----|----|----|------------|--------|---------|--------|
|             | H             | W  | W1 | L1 | L  |            |        |         |        |
| TBS925-CC12 | 25            | 25 | 25 | 60 | 55 | CC..1204.. | RTM830 | MS5011A | TF20   |